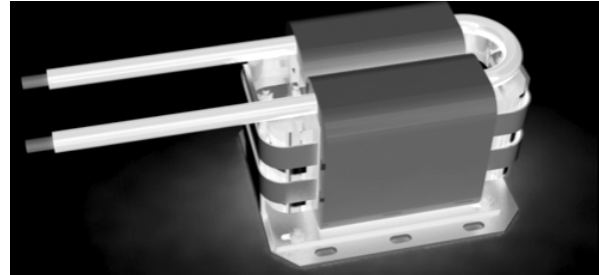


AMC Series

High performances AC choke series for Renewable Energy Inverters

Features

- High integration density for high inductance and current values
- High inductance value: 1 to 3mH
- Current rating : Up to 60Arms @50Hz
- Choke designed for 20% of current ripple @20kHz
- Operating temperature from -20°C to 70°C
- UL 1446 insulation system, UL 94V0 approved materials
- Possibility of customized of output terminals: racket, fast on, direct leads...



Applications

- Inverters for Renewable Energy applications
- UPS inverters

Electrical specifications

Code	L0 ⁽¹⁾ INDUCTANCE ±10% (mH) at 1V/20kHz/0A	I _{RMS} @50Hz MAX (A)	ΔI@20kHz MAX (A)	I _{PEAK} ^(1, 2) MAX (A)	DCR ⁽¹⁾ MAX (mΩ)	Total losses at 100°C (W)	Heating at Total losses (°C)
AMC10-1-30	1	30	9	47	17	40	50
AMC20-1-40	1	40	12	62	19	57	50
AMC32-1-50	1	50	14	78	12	65	45
AMC40-1-60	1	60	17	94	12	85	50
AMC10-2-20	2	20	6	32	55	38	45
AMC20-2-30	2	30	9	47	38	61	55
AMC40-2-40	2	40	12	62	18	76	45
AMC20-3-20	3	20	6	32	40	42	40
AMC32-3-30	3	30	9	47	40	74	50

Notes

(1) All test data are referenced to 25°C ambient temperature

(2) Maximum current before drop of inductance value

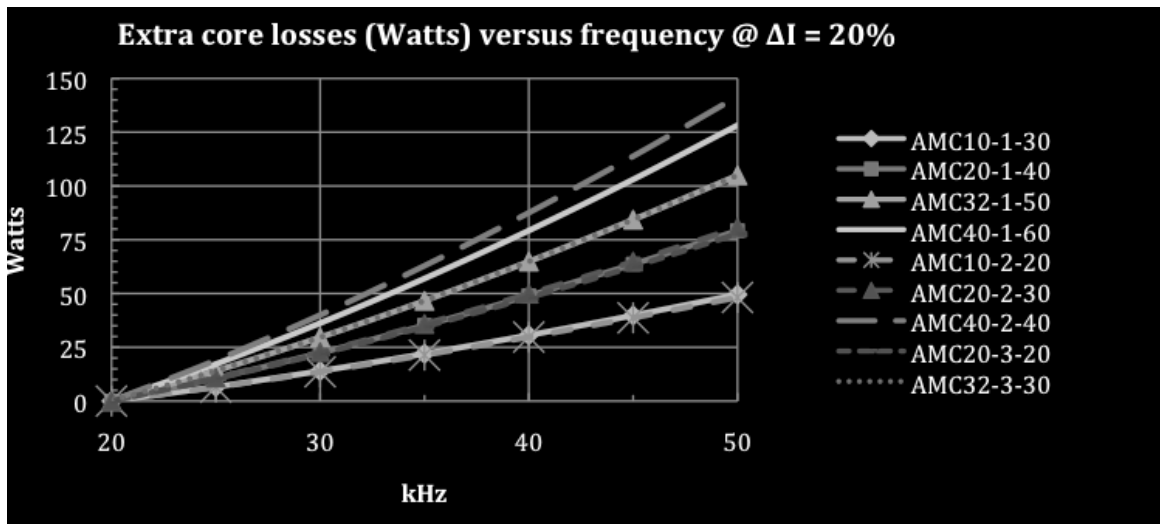
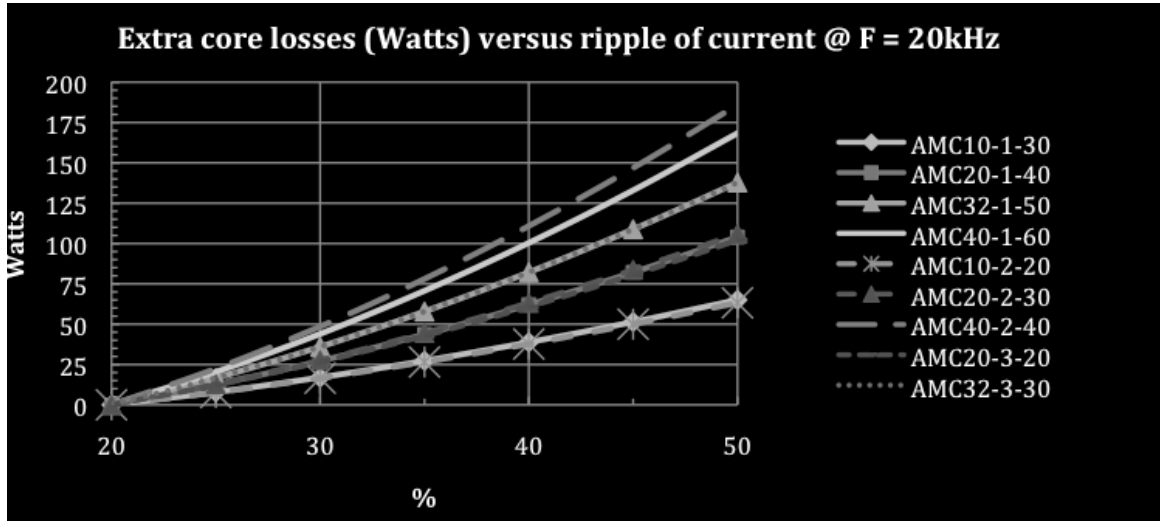
(3) Continuous operating temperature range must be within -25°C/+130°C (ambient + self heating) under worst case conditions

AMC Series

High performances AC choke series for Renewable Energy Inverters

High Energy Storage Chokes

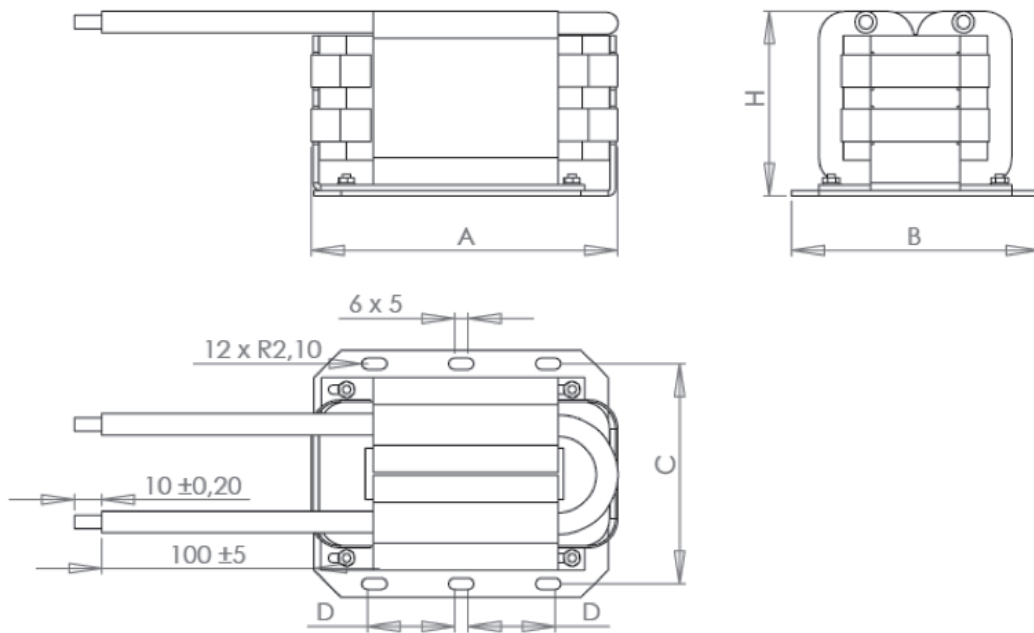
Typical performances versus ripple of current and frequency



AMC Series

High performances AC choke series for Renewable Energy Inverters

Dimensions (mm)



Code	A _{MAX}	B _{MAX}	C _{±0.2}	D _{±0.2}	H _{MAX}
AMC10-X-XX	113	91	81	32	78
AMC20-X-XX	133	107	97	44	88
AMC32-X-XX	142	133	127	44	98
AMC40-X-XX	142	133	127	44	113

Packaging

Antistatic trays with carton grids in carton box