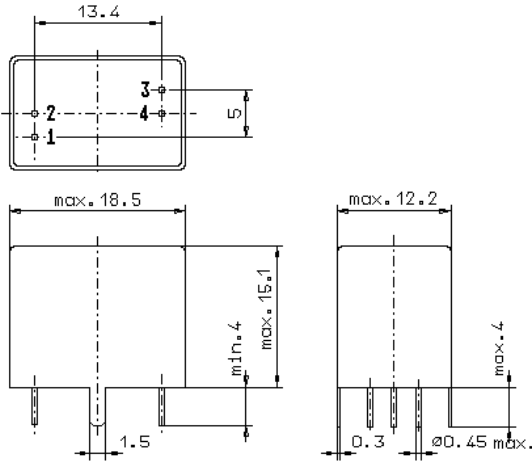


Specification for monolithic crystal filter:

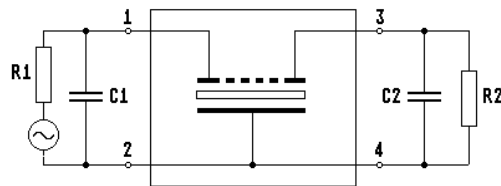
MQF 10.7-1500/54

1. General

1.1. Package:



GV5.1



- | | |
|-----------------------------------|------------------|
| 1.2. Type name: | MQF 10.7-1500/54 |
| 1.3. Number of poles: | 4 |
| 1.4. Operating temperature range: | -20°C to +70°C |
| 1.5. Storage temperature range: | -45°C to +85°C |

2. Electric values

- | | |
|---|-------------------------------------|
| 2.1. Nominal centre frequency f_0 : | 10.7 MHz |
| 2.2. Pass band | |
| 2.2.1. Centre frequency f_0 : | 10.7 MHz |
| 2.2.2. Bandwidth between 3 dB - frequencies: | $> f_0 \pm 7.5$ kHz |
| 2.2.3. Ripple: | < 1.5 dB at $f_0 \pm 6.0$ kHz |
| 2.2.4. Insertion loss: | < 3.0 dB |
| (measured on smallest attenuation in pass band) | |
| 2.3. Stop band | |
| 2.3.1. $f_0 \pm 35$ kHz | > 50 dB |
| 2.3.2. $f_0 \pm 55$ kHz | > 60 dB |
| 2.3.3. Alternate attenuation | > 80 dB (except spurious) |
| 2.4. Terminating impedance (input and output): | $50 \Omega // 0$ pF |
| 2.5. Maximum input power level: | +15 / +25 (working / non-damaged) |
| 3. Marking on the package: | VI yyww 10.7-1500/54 |
| 4. Environment conditions: | Corresponding to Telefilter CF001 |

Edited by: _____ date: _____ name: _____