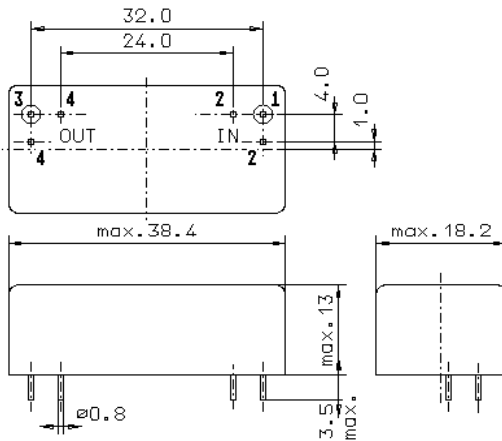


Specification for monolithic crystal filter:

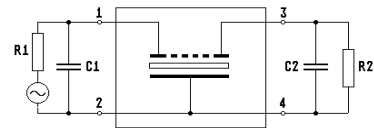
MQF 10.7-1500/29

1. General

1.1. Package:



GM17



- 1.2. Type name: MQF 10.7-1500/29
- 1.3. Number of poles: 6
- 1.4. Operating temperature range: -55°C to +85°C

2. Electric values

- 2.1. Nominal centre frequency fo: 10.7 MHz

2.2. Pass band

- 2.2.1. Bandwidth between 3 dB - frequencies: ≥ 7.5 kHz
- 2.2.2. Ripple: ≤ 1.5 dB at $f_o \pm 5.0$ kHz
- 2.2.3. Insertion loss: ≤ 3.5 dB
(measured on smallest attenuation in pass band)

2.3. Stop band

- 2.3.1. $f_o \pm 25$ kHz: ≥ 60 dB
- 2.3.2. Alternate Attenuation: ≥ 80 dB
- 2.3.3. Spurious responses: ≥ 60 dB

- 2.4. Terminating impedance (input and output): $50 \Omega // 0$ pF

- 3. Marking on the package: manufacturer, date code
MQF 10.7-1500/29

- 4. Environment conditions: Corresponding to Telefilter CF001

Edited by: _____ date: _____ name: _____