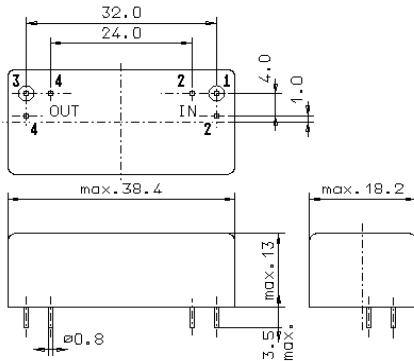


Specification for monolithic crystal filter:

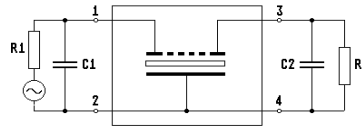
MQF 10.7-1000/13

1. General

1.1. Case:



GM17



- 1.2. Type name: MQF 10.7-1000/13
- 1.3. Number of poles: 6
- 1.4. Operating temperature range: 0°C to +70°C
- 1.5. Storage temperature range: -45°C to +85°C

2. Electric values

- 2.1. Nominal centre frequency f_0 : 10.7 MHz

2.2. Pass band

- 2.2.1. Bandwidth between 3 dB - frequencies: $\geq f_0 \pm 5.0$ kHz
- 2.2.2. Ripple (at $f_0 \pm 3.0$ kHz): < 2.0 dB
- 2.2.3. Insertion loss: < 3.0 dB
(measured on smallest attenuation in pass band)

2.3. Stop band

- 2.3.1. $f_0 \pm 15$ kHz: > 60 dB
- 2.3.2. Alternate attenuation: > 60 dB
- 2.4. Terminating impedance (input and output): $50 \Omega // 0$ pF
- 2.5. VSWR: $< 2.0 : 1$ (reflexion loss < -9.55 dB)

- 3. Marking on the case: manufacturer, date code
MQF 10.7-1000/13

- 4. Environment conditions: Corresponding to Telefilter CF001

Edited by: _____ date: _____ name: _____