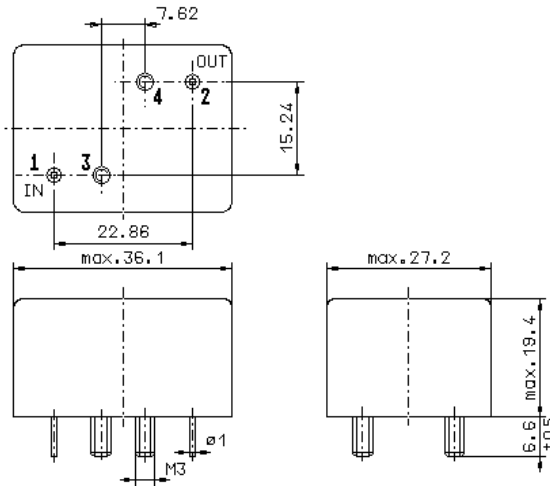


Specification for monolithic crystal filter:

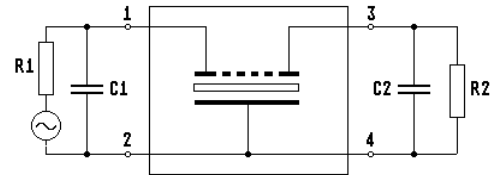
MQF 10.7-0300/09

1. General

1.1. Package:



GM11.0



- | | |
|-----------------------------------|------------------|
| 1.2. Type name: | MQF 10.7-0300/09 |
| 1.3. Number of poles: | 8 |
| 1.4. Operating temperature range: | -55°C to +100°C |
| 1.5. Storage temperature range: | -60°C to +105°C |

2. Electric values

- | | |
|-----------------------------------------------------------------------------|---------------------------------------------|
| 2.1. Nominal centre frequency f_0 : | 10.7 MHz |
| 2.2. Pass band | |
| 2.2.1. Centre frequency f_c : | 10.7 MHz \pm 320 Hz |
| 2.2.2. Bandwidth between 6 dB - frequencies: | $> f_c \pm 1.5$ kHz |
| 2.2.3. Ripple in pass band (peak to peak): | < 1.0 dB |
| 2.2.4. Absolute phase at f_0 (at +25°C): | 0 deg. \pm 27 deg. |
| 2.2.5. Insertion loss:
(measured on smallest attenuation in pass band) | < 6.0 dB |
| 2.3. Stop band | |
| 2.3.1. $f_c \pm 3.5$ kHz | > 60 dB |
| 2.3.2. $f_c \pm 4.5$ kHz.....1.0 MHz | > 80 dB |
| 2.3.3. Alternate attenuation: | > 90 dB |
| 2.4. Terminating impedance (input and output): | 1000 Ω // 0 pF |
| 2.5. Maximum drive level (working / non-damaged): | +10 dBm / +25 dBm |
| 3. Marking on the package: | manufacturer, date code
MQF 10.7-0300/09 |
| 4. Environment conditions: | Vectron MIL-standard |

Edited by: _____ date: _____ name: _____