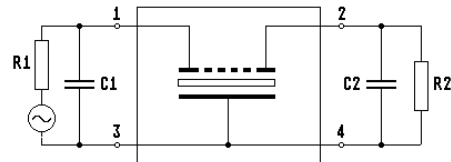
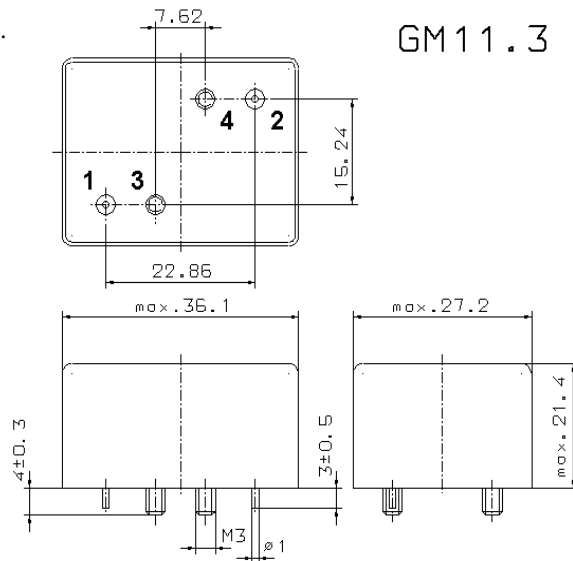


Specification for crystal filter:

QF 4.9985 - 0150/08

1. General

1.1.



Note: Pin 2 - Output Pin 3 - Ground

- | | |
|-----------------------------------|-------------------|
| 1.2. Type name: | QF 4.9985-0150/08 |
| 1.3. Number of poles: | 7 |
| 1.4. Operating temperature range: | 0°C to +75°C |
| 1.5. Storage temperature range: | -45°C to +85°C |

2. Electric values

- | | |
|---|--|
| 2.1. Nominal centre frequency f_0 : | 4.9985 MHz |
| 2.2. Pass band | |
| 2.2.1. Bandwidth between 2 dB frequencies: | $> f_0 \pm 0.75$ kHz |
| 2.2.2. Ripple at $f_0 \pm 0.75$ kHz: | < 2 dB |
| 2.2.3. Insertion loss:
(measured on smallest attenuation in pass band) | < 3.0 dB |
| 2.3. Stop band | |
| 2.3.1. $f_0 \pm 2.0$ kHz | > 60 dB |
| 2.3.2. Alternate attenuation: | > 80 dB |
| 2.4. Terminating impedance (input and output): | 50 Ω // 0 pF |
| 2.5. Outband Intermodulation | |
| - input power level: | -10 dBm |
| - frequencies: | $f_0 \pm 2.5$ kHz / $f_0 \pm 5.0$ kHz |
| - Intermodulation | > 80 dB |
| 3. Marking on the case: | manufacturer, date code
QF 4.9985-0150/08 |
| 4. Environment conditions: | Corresponding to Telefilter CF001 |

Edited by: _____ date: _____ name: _____