

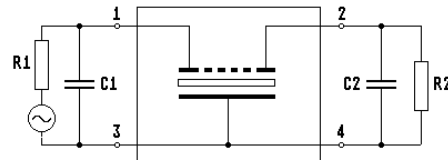
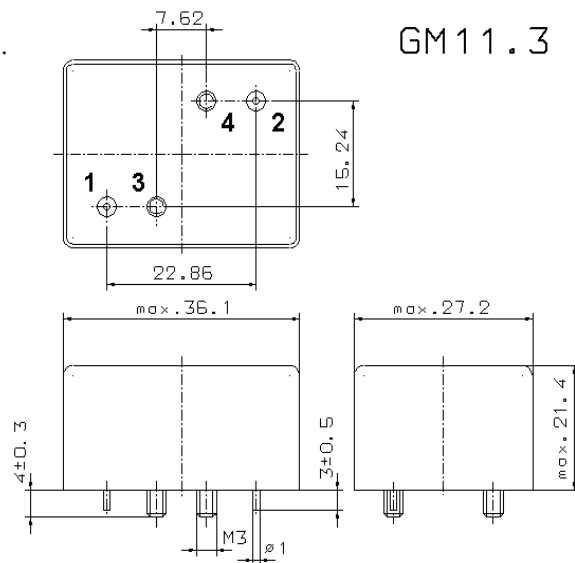
Specification for crystal filter:

**QF 4.9985 - 0060/08**

**1. General**

1.1.

GM11.3



Note: Pin 2 - Output Pin 3 - Ground

- |                                   |                   |
|-----------------------------------|-------------------|
| 1.2. Type name:                   | QF 4.9985-0060/08 |
| 1.3. Number of poles:             | 8                 |
| 1.4. Operating temperature range: | 0°C to +75°C      |
| 1.5. Storage temperature range:   | -45°C to +85°C    |

**2. Electric values**

- |   |  |
|---|--|
| 2.1. Nominal centre frequency fo:                 | 4.9985 MHz                                   |
| 2.2. <b>Pass band</b>                             |  |
| 2.2.1. Bandwidth between 2 dB frequencies:        | > fo ± 0.3 kHz                               |
| 2.2.2. Ripple at fo ± 0.3 kHz:                    | < 2 dB                                       |
| 2.2.3. Insertion loss:                            | < 4.0 dB                                     |
| ( measured on smallest attenuation in pass band ) |  |
| 2.3. <b>Stop band</b>                             |  |
| 2.3.1. fo ± 0.85 kHz                              | > 60 dB                                      |
| 2.3.2. Alternate attenuation:                     | > 80 dB                                      |
| 2.4. Terminating impedance ( input and output ):  | 50 Ω // 0 pF                                 |
| 2.5. Outband Intermodulation                      |  |
| - input power level:                              | -10 dBm                                      |
| - frequencies:                                    | fo ± 1 kHz / fo ± 2 kHz                      |
| - Intermodulation                                 | > 80 dB                                      |
| 3. Marking on the case:                           | manufacturer, date code<br>QF 4.9985-0060/08 |
| 4. Environment conditions:                        | Corresponding to Telefilter CF001            |

Edited by: \_\_\_\_\_ date: \_\_\_\_\_ name: \_\_\_\_\_