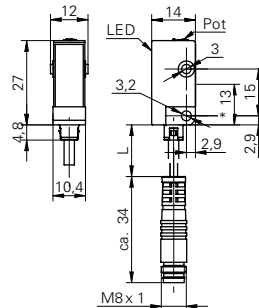


## Through beam sensors

## FEDK 10P1101/KS35

## dimension drawing



\* receiver axis

## general data

type	through beam sensor
emitter / receiver	receiver
actual range $S_b$	5 m
nominal range $S_n$	6 m
alignment / soiled lens indicator	flashing light indicator
light indicator	LED yellow
sensitivity adjustment	potentiometer, 270°

## electrical data

response time / release time	< 1,4 ms
voltage supply range +Vs	10 ... 30 VDC
current consumption max. (no load)	16 mA
current consumption typ.	16 mA
voltage drop Vd	< 1,8 VDC
output function	light operate
output circuit	PNP
output current	< 100 mA
short circuit protection	yes
reverse polarity protection	yes

## mechanical data

width / diameter	10,4 mm
height / length	27 mm
depth	14 mm
type	rectangular
housing material	plastic (ASA)
front (optics)	PMMA
connection types	flylead connector M8 3 pin

## ambient conditions

operating temperature	-25 ... +65 °C
protection class	IP 65

## photo



## connection diagram

