

TOSHIBA CMOS Digital Integrated Circuit Silicon Monolithic

TC7PB54FC, TC7PB54FK

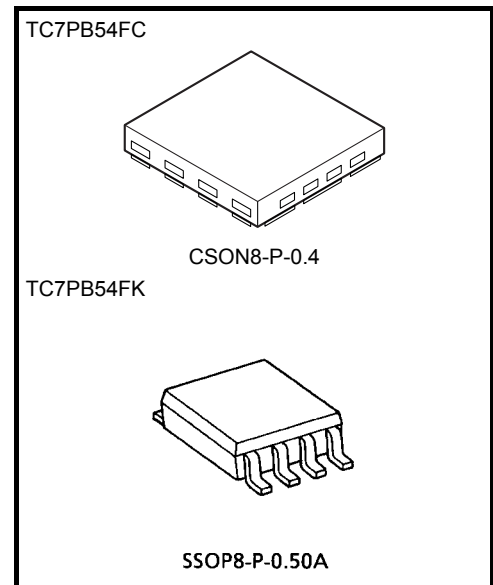
Single 1-of-3 Demultiplexer with N-channel pull-down MOSFET

The TC7PB54 is a single 1-of-3 high-speed CMOS demultiplexer designed for low-voltage applications. The low ON-resistance of the switch allows the input (COM) to be connected to the outputs (Ch0 and Ch1) while maintaining CMOS low power dissipation. The device uses P-channel MOSFETs for the switch block between the input and output pins. The single-input multiplexer can direct the potential supplied on the COM pin to one of the Ch0 to Ch2 pins depending on the combined state of control pins A and B. The unused Chx pins are clamped to ground using an N-channel MOSFET.

All inputs are equipped with protection circuits against static discharge.

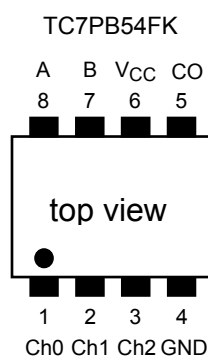
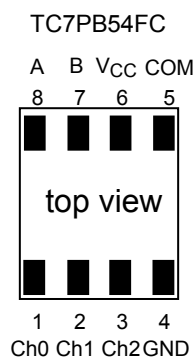
Features

- Operating voltage range: $V_{CC} = 2$ to 3.6 V
- High-speed operation: $t_{pd} = 70$ ns (max) @2.7 V
- Very low ON-resistance: $R_{ON} = 3 \Omega$ (max) @2.7 V
- High latch-up immunity: Higher than or equal to ± 300 mA
- ESD performance: Machine model $\geq \pm 200$ V
Human body model $\geq \pm 2000$ V
- Package: CSON8 (CST8), SSOP8 (US8)

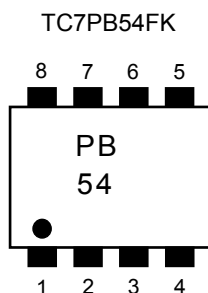
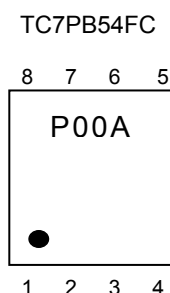


Weight
 CSON8-P-0.4: 0.002 g (typ.)
 SSOP8-P-0.50A: 0.01 g (typ.)

Pin Assignment (top view)



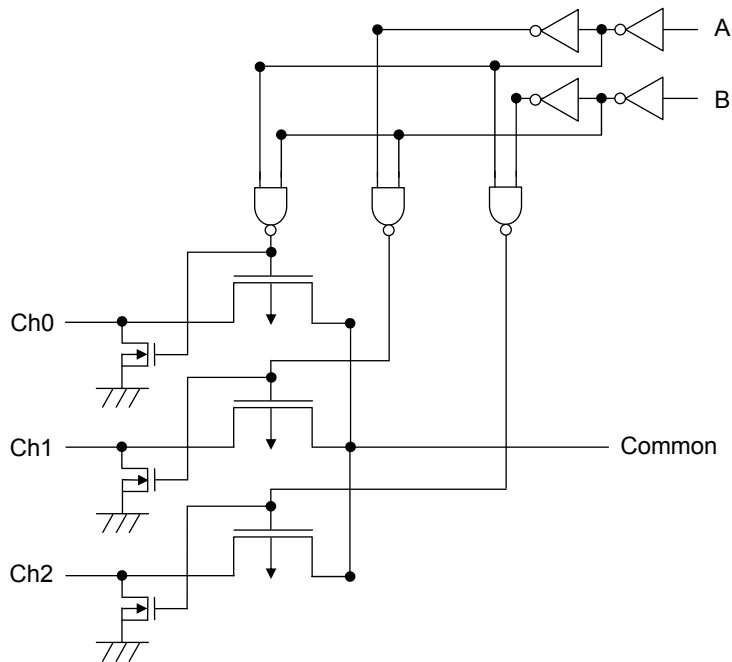
Marking



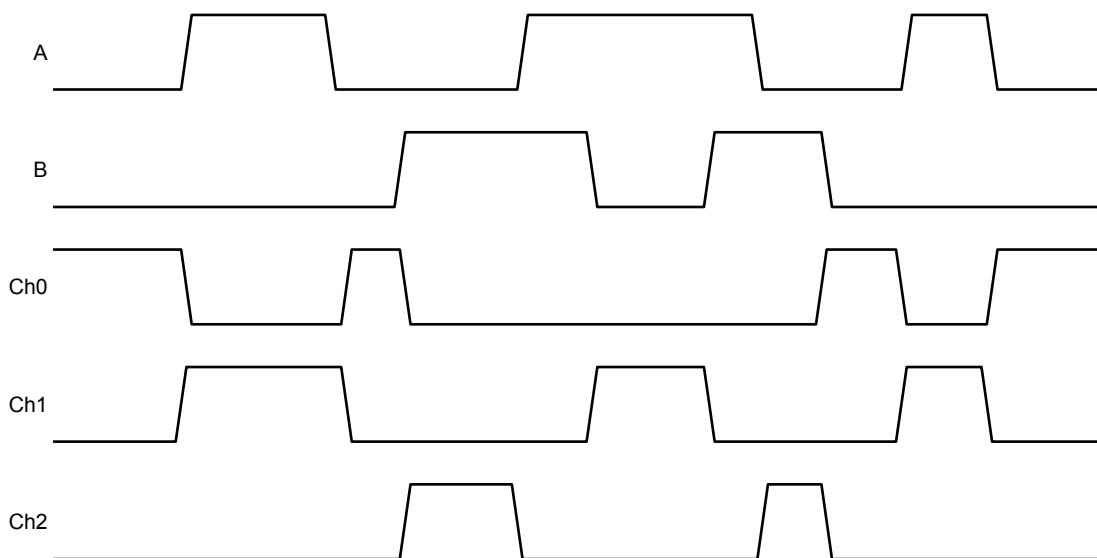
Truth Table

Input		Function		
A	B	Ch0	Ch1	Ch2
L	L	COM	L	L
H	L	L	COM	L
L	H	L	L	COM
H	H	L	L	L

System Diagram



Timing Chart



Note: COM = V_{CC}

Absolute Maximum Ratings (Note 1)

Characteristics	Symbol	Rating	Unit
Power supply voltage	V_{CC}	-0.5 to 4.6	V
DC input voltage (A, B)	V_{IN}	-0.5 to 4.6	V
DC switch voltage (COM and Ch)	V_S	-0.5 to $V_{CC} + 0.5$	V
Input diode current (A, B)	I_{IK}	-25	mA
Output diode current (COM and Ch)		± 25	mA
Switch I/O current (COM to Ch)	I_S	128	mA
N-channel MOSFET current (Note 2)	I_{OUT}	25	mA
Power dissipation	P_D	150 (CSON8) 200 (SSOP8)	mW
DC VCC/ground current	I_{CC}/I_{GND}	± 50	mA
Storage temperature	T_{stg}	-65 to 150	$^{\circ}C$

Note 1: Exceeding any of the absolute maximum ratings, even briefly, may lead to deterioration in IC performance or even destruction.

Using continuously under heavy loads (e.g. the application of high temperature/current/voltage and the significant change in temperature, etc.) may cause this product to decrease in the reliability significantly even if the operating conditions (i.e. operating temperature/current/voltage, etc.) are within the absolute maximum ratings and the operating ranges.

Please design the appropriate reliability upon reviewing the Toshiba Semiconductor Reliability Handbook ("Handling Precautions"/"Derating Concept and Methods") and individual reliability data (i.e. reliability test report and estimated failure rate, etc).

Note 2: N-channel MOSFET allowable current to clamp the unused pin to ground.

Operating Ranges (Note 1)

Characteristics	Symbol	Rating	Unit
Power supply voltage	V_{CC}	2.0 to 3.6	V
Input voltage (A, B)	V_{IN}	0 to 3.6	V
DC switch voltage (COM and Ch) (Note 2)	V_S	0 to $V_{CC} + 0.3$	V
Operating temperature	T_{opr}	-40 to 85	$^{\circ}C$
Input rise and fall time (A, B)	d_t/d_v	0 to 10	ns/V

Note 1: The operating ranges must be maintained to ensure the normal operation of the device.
Unused inputs must be tied to either V_{CC} or GND.

Note 2: Ensure that the voltages on the COM and Ch pins do not exceed $V_{CC} + 0.3$ V even during a power-up sequence or when the power decreases.

Electrical Characteristics

DC Electrical Characteristics (Ta = -40 to 85°C)

Characteristics	Symbol	Test Condition	V _{CC} (V)	Min	Typ.	Max	Unit
High-level input voltage	V _{IH}	—	2.8	1.55	—	—	V
			2.3	1.50	—	—	
Low-level input voltage	V _{IL}	—	2.8	—	—	0.6	
			2.3	—	—	0.5	
Input leakage current (A, B)	I _{IN}	A, B = 0 to 3.6 V	2.0 to 3.6	—	—	±1.0	μA
Off-state leakage current	I _{IZ}	COM, Ch = 0 to V _{CC}	2.0 to 3.6	—	—	±1.0	μA
Output diode current (COM and Ch)	I _{IK}	COM, Ch = V _{CC} - 0.3 V to V _{CC} + 0.3 V	2.0 to 3.6	—	—	100	μA
Switch ON resistance (Note 1)	R _{ON}	V _{IS} = 2.7 to 3.0 V, I _{IS} = 3 mA (Note 1)	2.7 to 3.0	—	1.6	3	Ω
		V _{IS} = 2.3 V, I _{IS} = 3 mA	2.3	—	2.1	5	
		V _{IS} = 2.7 to 3.0 V, I _{IS} = 30 mA (Note 2)	2.7 to 3.0	—	1.6	3	
		V _{IS} = 2.3 V, I _{IS} = 30 mA	2.3	—	2.1	5	
N-ch MOSFET ON resistance	R	I _L = 5 mA	2.7	—	—	50	Ω
		I _L = 4 mA	2.3	—	—	75	
Increase in I _{CC} per Input	I _{CC}	V _{IN} = V _{CC} or GND	3.6	—	—	10	μA
	I _{CC} T	PER INPUT: V _{IN} = 1.7 V	2.95	—	—	25	μA

Note 1: Measured by the voltage drop between the COM and Ch pins at the indicated current through the switch. On resistance is determined by the lower of the voltages on the two (COM or Ch) pins.

Note 2: The typical value of Ron is V_{CC} (= 2.85 V).

AC Electrical Characteristics (Ta = -40 to 85°C)

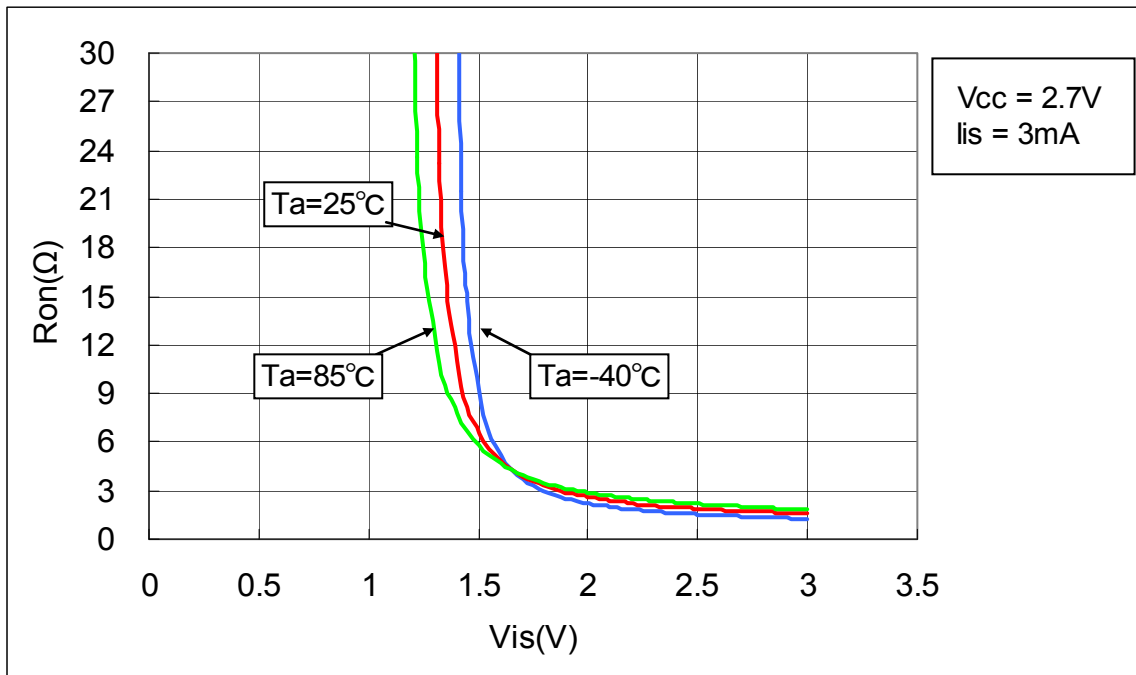
Characteristics	Symbol	Test Condition	V _{CC} (V)	Min	Max	Unit
Propagation delay time (A, B to Ch)	t _{pLH} t _{pHL}	COM = V _{CC} (Figures 1 and 2)	3.0 ± 0.3	—	70	ns
			2.5 ± 0.2	—	140	

Capacitive Characteristics (Ta = 25°C)

Characteristics	Symbol	Test Condition	V _{CC} (V)	Typ.	Unit
Control input capacitance (A, B)	C _{IN}	(Note)	3.0	5	pF
COM-Ch I/O capacitance	C _{I/O}	(Note)	3.0	70	pF

Note: Capacitance quoted is not tested.

$R_{ON} - V_{IS}$ Characteristic Curves $V_{CC} = 2.7\text{ V}$, $I_{IS} = 3\text{ mA}$, $T_a = -40/25/85^\circ\text{C}$



Meanings of Symbols

Symbol	Description
I_{IN}	Leakage current when voltage is applied to the A pin
I_{IZ}	Leakage current when voltage of 0 to V_{CC} is applied between the COM and Ch pins
I_{IK}	Leakage current when voltage of V_{CC} to $V_{CC} + 0.3\text{ V}$ is applied between the COM and Ch pins
R_{ON}	Resistance between the COM and Ch pins
V_{IS}	Reference voltage for measuring R_{ON}
I_{IS}	Reference current for measuring R_{ON}
R	Resistance of the N-channel MOS used to fixed the logical state
I_L	Reference current drawn from the N-channel MOS used to fixed the logical state

AC Test Circuit

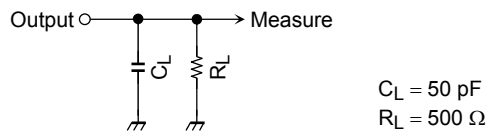


Figure 1

AC Waveforms

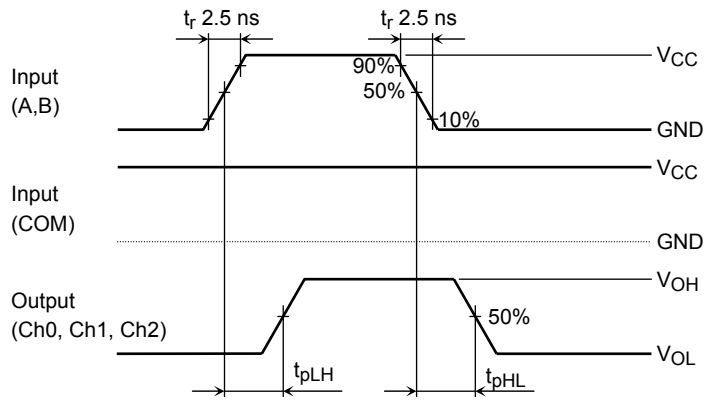
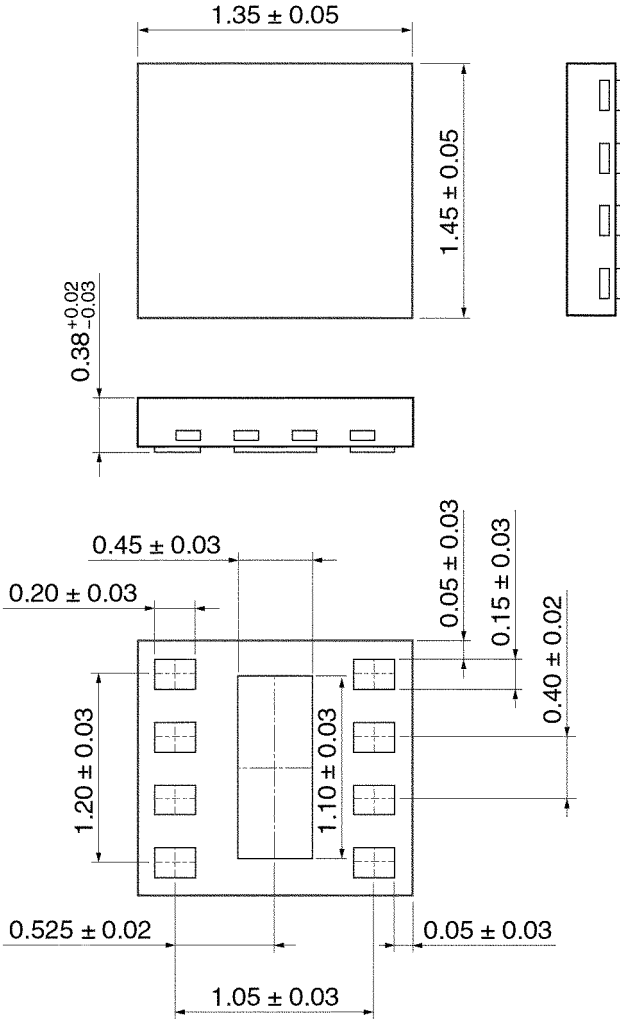


Figure 2 t_{pLH} , t_{pHL}

Package Dimensions

CSON8-P-0.4

Unit: mm

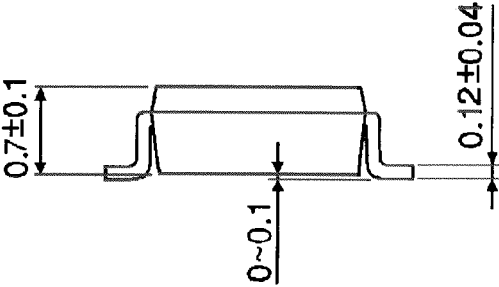
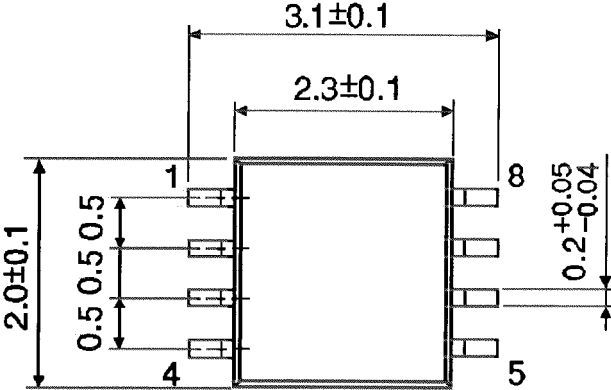


Weight: 0.002 g (typ.)

Package Dimensions

SSOP8-P-0.50A

Unit : mm



Weight: 0.01 g (typ.)

RESTRICTIONS ON PRODUCT USE

- Toshiba Corporation, and its subsidiaries and affiliates (collectively "TOSHIBA"), reserve the right to make changes to the information in this document, and related hardware, software and systems (collectively "Product") without notice.
- This document and any information herein may not be reproduced without prior written permission from TOSHIBA. Even with TOSHIBA's written permission, reproduction is permissible only if reproduction is without alteration/omission.
- Though TOSHIBA works continually to improve Product's quality and reliability, Product can malfunction or fail. Customers are responsible for complying with safety standards and for providing adequate designs and safeguards for their hardware, software and systems which minimize risk and avoid situations in which a malfunction or failure of Product could cause loss of human life, bodily injury or damage to property, including data loss or corruption. Before creating and producing designs and using, customers must also refer to and comply with (a) the latest versions of all relevant TOSHIBA information, including without limitation, this document, the specifications, the data sheets and application notes for Product and the precautions and conditions set forth in the "TOSHIBA Semiconductor Reliability Handbook" and (b) the instructions for the application that Product will be used with or for. Customers are solely responsible for all aspects of their own product design or applications, including but not limited to (a) determining the appropriateness of the use of this Product in such design or applications; (b) evaluating and determining the applicability of any information contained in this document, or in charts, diagrams, programs, algorithms, sample application circuits, or any other referenced documents; and (c) validating all operating parameters for such designs and applications. **TOSHIBA ASSUMES NO LIABILITY FOR CUSTOMERS' PRODUCT DESIGN OR APPLICATIONS.**
- Product is intended for use in general electronics applications (e.g., computers, personal equipment, office equipment, measuring equipment, industrial robots and home electronics appliances) or for specific applications as expressly stated in this document. Product is neither intended nor warranted for use in equipment or systems that require extraordinarily high levels of quality and/or reliability and/or a malfunction or failure of which may cause loss of human life, bodily injury, serious property damage or serious public impact ("Unintended Use"). Unintended Use includes, without limitation, equipment used in nuclear facilities, equipment used in the aerospace industry, medical equipment, equipment used for automobiles, trains, ships and other transportation, traffic signaling equipment, equipment used to control combustions or explosions, safety devices, elevators and escalators, devices related to electric power, and equipment used in finance-related fields. Do not use Product for Unintended Use unless specifically permitted in this document.
- Do not disassemble, analyze, reverse-engineer, alter, modify, translate or copy Product, whether in whole or in part.
- Product shall not be used for or incorporated into any products or systems whose manufacture, use, or sale is prohibited under any applicable laws or regulations.
- The information contained herein is presented only as guidance for Product use. No responsibility is assumed by TOSHIBA for any infringement of patents or any other intellectual property rights of third parties that may result from the use of Product. No license to any intellectual property right is granted by this document, whether express or implied, by estoppel or otherwise.
- **ABSENT A WRITTEN SIGNED AGREEMENT, EXCEPT AS PROVIDED IN THE RELEVANT TERMS AND CONDITIONS OF SALE FOR PRODUCT, AND TO THE MAXIMUM EXTENT ALLOWABLE BY LAW, TOSHIBA (1) ASSUMES NO LIABILITY WHATSOEVER, INCLUDING WITHOUT LIMITATION, INDIRECT, CONSEQUENTIAL, SPECIAL, OR INCIDENTAL DAMAGES OR LOSS, INCLUDING WITHOUT LIMITATION, LOSS OF PROFITS, LOSS OF OPPORTUNITIES, BUSINESS INTERRUPTION AND LOSS OF DATA, AND (2) DISCLAIMS ANY AND ALL EXPRESS OR IMPLIED WARRANTIES AND CONDITIONS RELATED TO SALE, USE OF PRODUCT, OR INFORMATION, INCLUDING WARRANTIES OR CONDITIONS OF MERCHANTABILITY, FITNESS FOR A PARTICULAR PURPOSE, ACCURACY OF INFORMATION, OR NONINFRINGEMENT.**
- Do not use or otherwise make available Product or related software or technology for any military purposes, including without limitation, for the design, development, use, stockpiling or manufacturing of nuclear, chemical, or biological weapons or missile technology products (mass destruction weapons). Product and related software and technology may be controlled under the Japanese Foreign Exchange and Foreign Trade Law and the U.S. Export Administration Regulations. Export and re-export of Product or related software or technology are strictly prohibited except in compliance with all applicable export laws and regulations.
- Please contact your TOSHIBA sales representative for details as to environmental matters such as the RoHS compatibility of Product. Please use Product in compliance with all applicable laws and regulations that regulate the inclusion or use of controlled substances, including without limitation, the EU RoHS Directive. TOSHIBA assumes no liability for damages or losses occurring as a result of noncompliance with applicable laws and regulations.