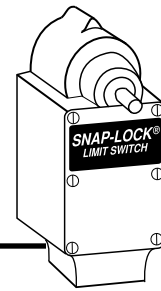


Single Pole
Standard Environment

Limit
Switches

Sliding
Contacts



Limit Switches

The versatility of the Snap-Lock mechanism is gained through the use of a series of uniquely designed cams. The cam and cam mechanism allow features such as bi-directional operation and generous overtravel. These features make the EA710 Series one of the most popular. Can be furnished with Standard, Wide or Long mounting.

EA710 Single Pole 1 N.O. - 1 N.C. / Sliding Contacts / Cam Action

| Standard Mounting Model No. | Wide Mounting Model No. | Long Mounting Model No. | Dir. Of Operation | Angle A Trip Travel | Angle B Reset Travel | Angle C Recom. Travel | Angle D Total Travel | Angle E Min. Travel to Maintain | Angle F Overall Travel | Torque (inch lbs) | Contact Config. | Data Drawing |
|---|-------------------------|-------------------------|-------------------|---------------------|----------------------|-----------------------|----------------------|---------------------------------|------------------------|-------------------|-----------------|--------------|
| STANDARD TRAVEL | | | | | | | | | | | | |
| EA710-10000 | EA710-40000 | EA710-70000 | CW | 18° | 14° | 30° | 90° | - | - | 15 | A | 1 |
| EA710-10001 | EA710-40001 | EA710-70001 | CCW | 18° | 14° | 30° | 90° | - | - | 15 | B | 1 |
| EA710-10100 | EA710-40100 | EA710-70100 | CW/CCW | 18° | 14° | 30° | 90° | - | - | 15 | C | 1 |
| MAINTAINED CONTACTS AND LEVER POSITION | | | | | | | | | | | | |
| EA710-16000 | EA710-46000 | EA710-76000 | CW | 55° | 22° | 60° | 116° | 55° | 64° | 6 | D | 2 |
| | | | CCW | 25° | 25° | 60° | 124° | 54° | 56° | 9 | | |

Common Switch Characteristics

| SINGLE POLE, STANDARD ENVIRONMENT, SLIDING CONTACTS | |
|---|-------------------------------|
| NEMA Enclosure Type | 1, 4, 13 |
| Housing Material | Zinc |
| Ambient Temperature Range* | -20°C to +90°C |
| Shipping Weight | 3 lbs. approx. |
| Lever Adjustment | 7°30' Increments Thru 360° |
| Contacts | Sliding, Silver Alloy, Form Z |

Continuous Current Rating - Amperes

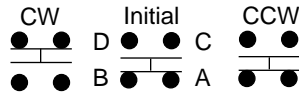
| VOLTAGE | AC | DC |
|---------|------|-----|
| 125 | 10.0 | 2.5 |
| 250 | 7.5 | .75 |
| 480 | 5.0 | - |
| 600 | 2.5 | - |

75-100% Power Factor

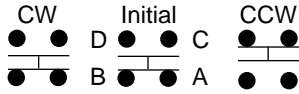
See Operating Levers Section

Contact Configurations

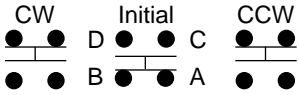
CIRCUIT A



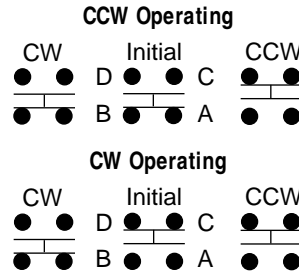
CIRCUIT B



CIRCUIT C

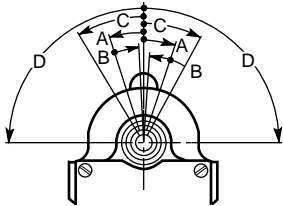


CIRCUIT D

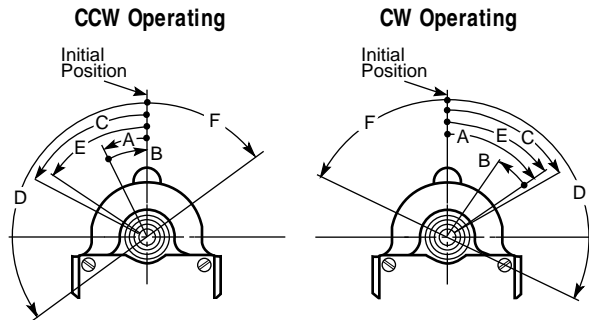


Operational Data Drawings

DRAWING #1



DRAWING #2

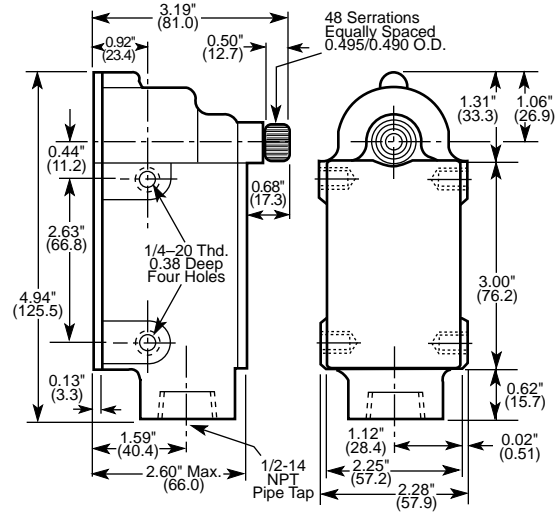


To change switch operation from CW operating to CCW operating, operate switch through angle E. Remove lever and reset at initial position.

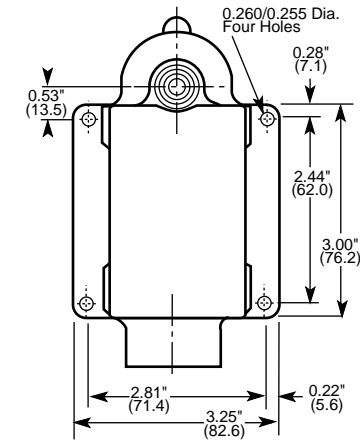
Dimensions and Mounting

EA710

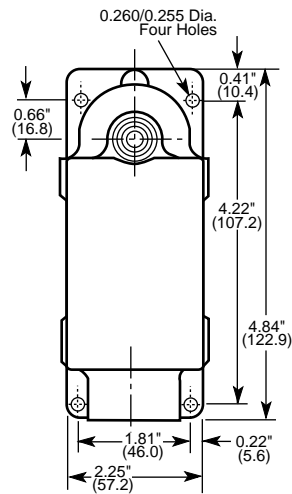
STANDARD MOUNTING PLATE



WIDE MOUNTING PLATE



LONG MOUNTING PLATE



Dimensions: inches/(mm)

Limit Switches

NAMCO

2013 West Meeting Street • Lancaster, SC 29720
1-803-286-8491 • FAX: 1-800-678-6263
www.namcocontrols.com

For technical assistance, call 1-800-NAMTECH