

# UM11987

PCA9421UK-EVM evaluation board

Rev. 1.0 — 8 November 2023

User manual

## Document information

Information	Content
Keywords	PCA9421UK-EVM evaluation board
Abstract	This user manual provides guidelines on how to use the PCA9421-EVM evaluation board



**IMPORTANT NOTICE****For engineering development or evaluation purposes only**

NXP provides the product under the following conditions:

This evaluation kit is for use of **ENGINEERING DEVELOPMENT OR EVALUATION PURPOSES ONLY**.

It is provided as a sample IC pre-soldered to a printed-circuit board to make it easier to access inputs, outputs and supply terminals. This evaluation board may be used with any development system or other source of I/O signals by connecting it to the host MCU computer board via off-the-shelf cables. This evaluation board is not a Reference Design and is not intended to represent a final design recommendation for any particular application. Final device in an application heavily depends on proper printed-circuit board layout and heat sinking design as well as attention to supply filtering, transient suppression, and I/O signal quality.

The product provided may not be complete in terms of required design, marketing, and or manufacturing related protective considerations, including product safety measures typically found in the end device incorporating the product. Due to the open construction of the product, it is the responsibility of the user to take all appropriate precautions for electric discharge. In order to minimize risks associated with the customers' applications, adequate design and operating safeguards must be provided by the customer to minimize inherent or procedural hazards. For any safety concerns, contact NXP sales and technical support services.

## 1 Finding kit resources and information on the NXP web site

NXP Semiconductors provides online resources for this evaluation board and its supported device(s) on <http://www.nxp.com>.

The information page for PCA9421UK-EVM evaluation board is at <http://www.nxp.com/PCA9421UK-EVM>. The information page provides overview information, documentation, parametrics, ordering information and a **Getting Started** tab. The **Getting Started** tab provides quick-reference information applicable to using the PCA9421UK-EVM evaluation board, including the downloadable assets referenced in this document.

### 1.1 Collaborate in the NXP community

The NXP community is for sharing ideas and tips, ask and answer technical questions, and receive input on just about any embedded design topic.

The NXP community is at <http://community.nxp.com>.

## 2 Getting ready

Working with the PCA9421UK-EVM evaluation board requires the kit contents.

### 2.1 Kit contents/packing list

The kit contents include:

- Assembled and tested PCA9421UK-EVM evaluation board in an anti-static bag
- USB to MPSSE Serial cable for I2C communication
- USB 2.0 Cable
- Spare jumpers

### 2.2 Static handling requirements

#### CAUTION



This device is sensitive to ElectroStatic Discharge (ESD). Therefore care should be taken during transport and handling. You must use a ground strap or touch the PC case or other grounded source before unpacking or handling the hardware.

### 2.3 Minimum system requirements

This evaluation board requires a Windows PC workstation. Meeting these minimum specifications should produce great results when working with this evaluation board.

- 5.0 V power supply or USB with enough current capability (1.5 A or above for maximum performance)
- PCA9421 GUI installed on a Windows PC
- Multimeters to measure regulator outputs
- Oscilloscope (optional)
- USB enabled computer running Windows XP, Vista, 7, 8, or 10

### 3 Getting to know the hardware

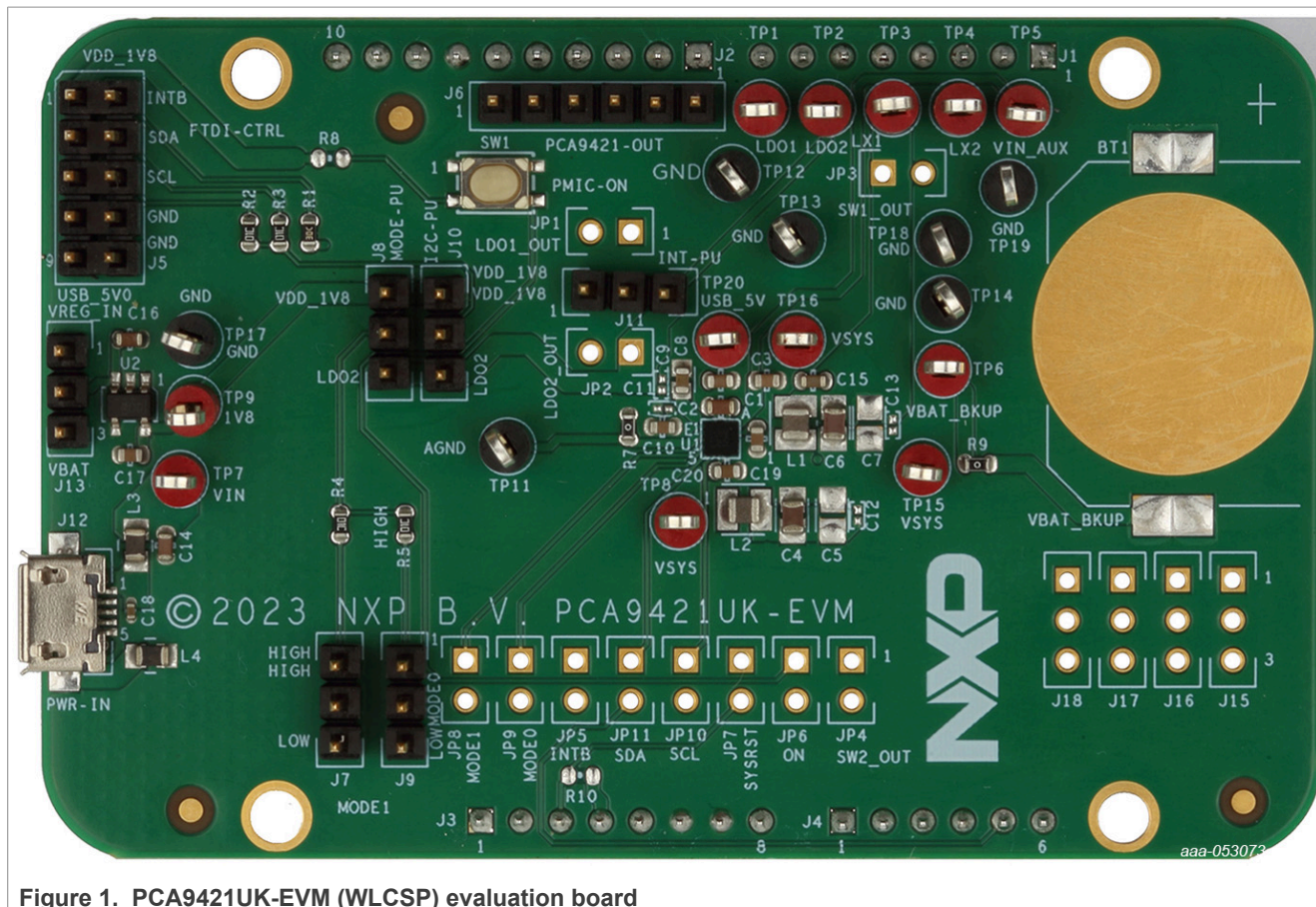


Figure 1. PCA9421UK-EVM (WLCSP) evaluation board

#### 3.1 Device description

The PCA9421 is a highly integrated Power Management IC (PMIC), targeted to provide a full power management solution for low-power microcontroller applications or other similar applications. The device integrates two step-down (buck) DC-DC converters which have I2C programmable output voltage. Both buck regulators have integrated high-side and low-side switches and related control circuitry, to minimize the external component counts; a Pulse-Frequency Modulation (PFM) approach is utilized to achieve better efficiency under light load condition. Other protection features such as overcurrent protection, under-voltage lockout (UVLO), etc., are also provided. By default, the input for these regulators is powered by either VIN or VIN\_AUX, whichever is greater.

In addition, two on-chip LDO regulators are provided to power up various voltage rails in the system.

Other features such as Fm+ I2C-bus interface, chip enable, interrupt signal, etc. are also provided.

The chip is offered in 2.09 mm x 2.09 mm, 5 x 5 bump, 0.4 mm pitch WLCSP package; and 3 mm x 3 mm, 24-pin QFN package.

#### 3.2 Key features

- Two step-down DC-DC converters
- Very low quiescent current

- Programmable output voltage
- SW1: core buck converter, 0.5 V to 1.5 V output, 25 mV/step, and a fixed 1.8 V, up to 250 mA
- SW2: system buck converter, 1.5 V to 2.1 V/2.7 V to 3.3 V output, 25 mV/step, up to 500 mA
- Low-power mode for extra power saving
- Two LDOs
- Programmable output voltage regulation
- LDO1: always-on LDO, 1.70 V to 1.90 V output, 25 mV/step, up to 1 mA
- LDO2: system LDO, 1.5 V to 2.1 V/2.7 V to 3.3 V output, 25 mV/step, up to 250 mA
- 1 MHz I2C-bus target interface
- -40 °C to +85 °C ambient temperature range
- Offered in 5 x 5 bump-array WLCSP and 24-pin QFN package

3.3 Board description

Table 1 describes the main elements on the board.

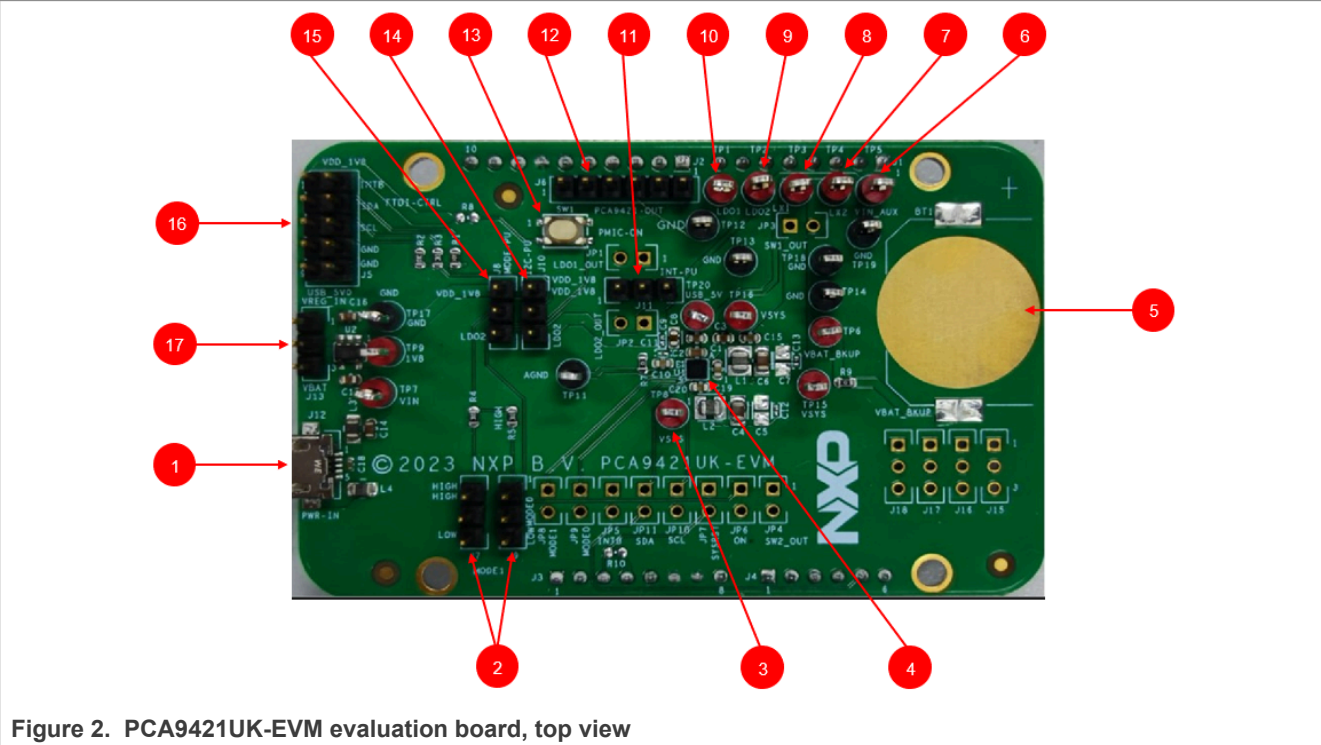


Table 1. PCA9421UK-EVM board description

Number	Name	Description
1	USB Input	USB power supply for the PCA9421UK
2	Logic pin for MODESEL1&2	Logic high or low for MODESEL1&2 pins
3	System Node	Electronic load for system
4	U1	PCA9421UK PMIC
5	VBAT_BKUP	Coin cell battery for back-up purpose
6	VIN_AUX	Connect external auxiliary voltage



Table 1. PCA9421UK-EVM board description...continued

Number	Name	Description
7	SW2_OUT	BUCK2 output
8	SW1_OUT	BUCK1 output
9	LDO2_OUT	LDO2 output
10	LDO1_OUT	LDO1 output
11	INT-PU	Interrupt pull-up to either LDO2 output or an external LDO output
12	PMIC-OUT	All regulators' output voltages
13	SW1	Button connected to ON pin
14	I2C-PU	Logic voltage selection for I2C
15	MODE-PU	Logic voltage selection for MODESEL0&1 function
16	FTDI-CTRL	I2C interface
17	VREG_IN	Input selection for an external LDO between VIN_AUX and USB input

3.4 Jumper and switch definitions

Figure 3 shows the location of jumpers and switches on the evaluation board.

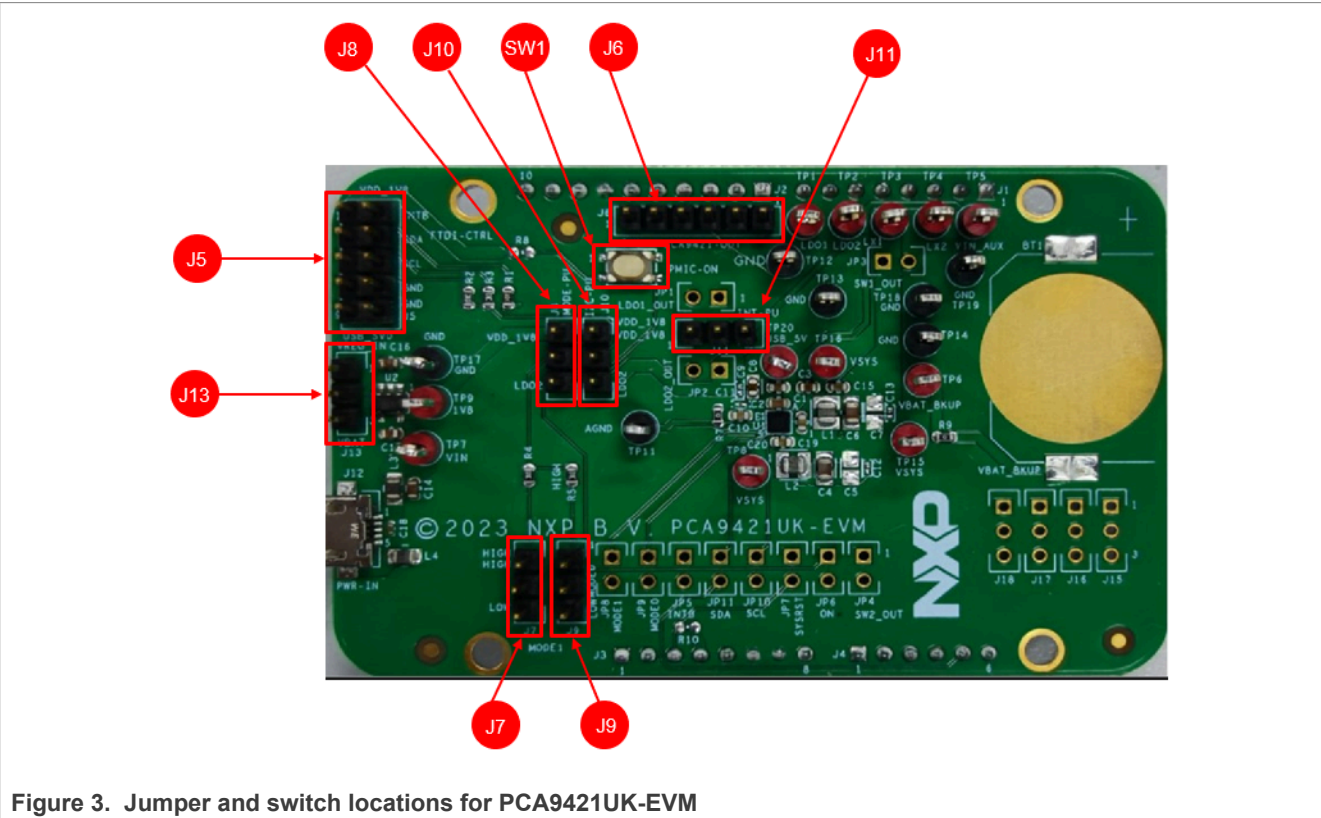


Figure 3. Jumper and switch locations for PCA9421UK-EVM

Table 2 describes the function and settings for each jumper and switch.

Table 2. Jumper and switch definitions

Jumper/ Switch	Description	Description	Connection/Result
SW1	ON	Open	Connect ON pin to ground when pressed. Causes wake-up event of PMIC
J5	FTDI-CTRL		I2C interface connection with FTDI cable. Orange color for SCL, Yellow and Green color for SDA
J6	Voltage monitor		Measure voltages for PCA9421UK 1: VIN_AUX 2: BUCK2 output 3: BUCK1 output 4: LDO2 output 5: LDO1 output
J7	Logic configuration for MODESEL0	[1-2]	Logic high
		[2-3]	Logic low
J8	Pullup configuration for MODE function	[1-2]	Pullup to external LDO output
		[2-3]	Pullup to LDO2 output
J9	Logic configuration for MODESEL1	[1-2]	Logic high
		[2-3]	Logic low
J10	Pullup configuration for I/O voltage	[1-2]	Pullup to external LDO output
		[2-3]	Pullup to LDO2 output
J11	Logic voltage configuration for INTB	[1-2]	Pullup to external LDO output
		[2-3]	Pullup to LDO2 output
J13		[1-2]	Pullup to USB input
		[2-3]	Pullup to VIN_AUX

### 3.5 Evaluation board connections

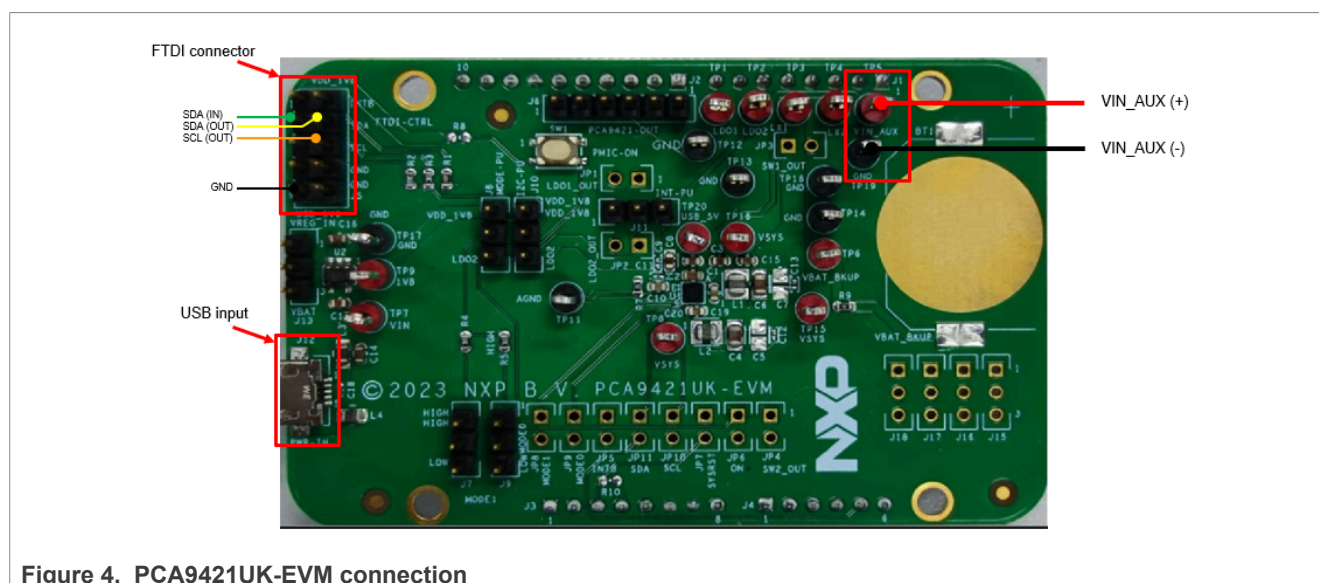


Figure 4. PCA9421UK-EVM connection

#### 3.5.1 Definitions

Connect wires on the following pins as shown in [Figure 4](#), and make sure the power supply is turned off during the wiring stage:

- VIN Input – Powered by USB Micro B connector.
- FTDI Connector – Connect to FTDI USB to I2C cable (Yellow/Green to SDA, Orange to SCL, and Black to GND)

### 3.6 Schematic, board layout and bill of materials

The schematic, board layout and bill of materials for the PCA9421UK-EVM evaluation board are available at <http://www.nxp.com/PCA9421UK-EVM>.



### 3.6.1 Placement

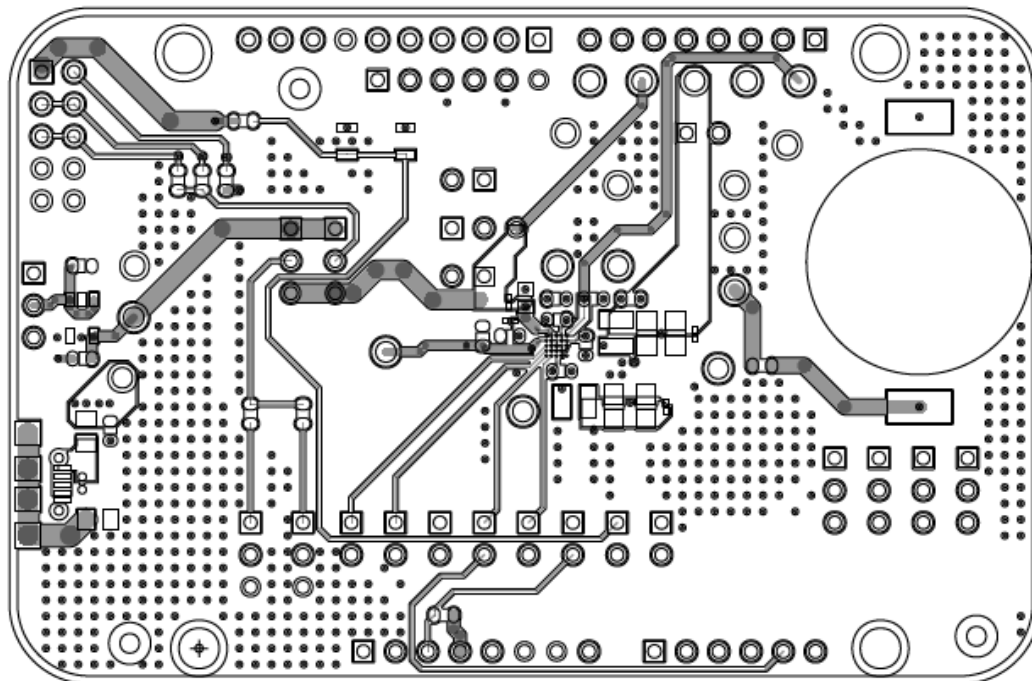


Figure 5. PCA9421UK-EVM evaluation board placement

### 3.6.2 Layout guideline

The following guidelines for PCA9421UK are arranged from most critical to least critical priority:

- Place ASYS input capacitor (C2) as close to ASYS and PGND as possible.
- Place VIN\_AUX input capacitor (C3) as close to VIN\_AUX and PGND as possible. The input capacitor delivers a high di/dt current pulse when the high-side MOSFET turns on. It is essential that parasitic inductance in the power input traces be minimized for high efficiency and reliability
- Minimize the trace length from LX1, LX2's output capacitor PGND1, PGND2 terminal to the input capacitor's GND terminal. This minimizes the area of the current loop when the high-side MOSFET is conducting. Keep all sensitive signals, such as feedback nodes, outside of these current loops with as much isolation as the design allows.
- Minimize the trace impedance from LX1, LX2 to their respective inductor and from each inductor to the output capacitor for LX1 and LX2. This minimizes the area of each current loop and minimizes LX trace resistance and stray capacitance to achieve optimal efficiency. Keep all sensitive signals, such as feedback nodes outside of these current loops and away from the LX switching voltage with as much isolation as the design allows.
- Create a PGND plane on the 2nd layer of the PCB immediately below the power components and bumps carrying high switching currents. This reduces parasitic inductance in the traces carrying high currents and shields signals on inner PCB layers from the switching waveforms on the top layer of the PCB.
- Connect the feedback terminal (SW1\_OUT, SW2\_OUT) to the local output capacitors for LX1 and LX2. The SW1\_OUT and SW2\_OUT connection to the local output capacitors should be placed as close to the PCA9421UK as possible to minimize the effects of voltage drop in the output trace connected to the load.
- Create a small AGND island for the VIN bypass capacitors. Connect this AGND island to the PCA9421UK PGND plane for LX1 and LX2 between the PGND terminals of the SW1\_OUT, SW2\_OUT output capacitors. This results in the most accurate sensing of the output voltage by the local feedback loop (OUT to AGND).

- Each of the PCA9421UK bumps has approximately the same ability to remove heat from the die. Connect as much metal as possible to each bump to minimize the  $\theta_{JA}$  associated with the PCA9421UK.

### 3.6.3 PCA9421UK-EVM BOM list

Table 3. Bill of Materials (BOM)

Ref	Description	Size (inch)	Manufacture	Part Number	Notes
C18	CAP CER 0.1 $\mu$ F 50V 10% X7R	0402	MURATA	GRM155R71H104KE14D	
C3, C10, C17, C19	CAP CER 1.0 $\mu$ F 16V 10% X7R	0603	MURATA	GRM188R71C105KE15	
C15	CAP CER 0.47 $\mu$ F 16V 10% X7R AEC-Q200	0603	MURATA	GCM188R71C474KA55D	
C14, C16	CAP CER 10 $\mu$ F 10V 20% X7R	0603	MURATA	GRM188Z71A106MA73	
C4, C6	CAP CER 10.0 $\mu$ F 16V 10% X7R	0805	MURATA	GRM21BZ71C106KE15	
C1, C8, C20	CAP CER 2.2 $\mu$ F 16V 10% X7R	0603	MURATA	GRM188Z71C225KE43	
C2	CAP CER 4.7 $\mu$ F 16V 10% X7R	0603	MURATA	GRM188Z71C475KE21	
L1, L2	IND PWR 2.2 $\mu$ H@1MHz 2.5A 20%	2016	Samsung Electro Mechanics	CIGT201610EH2R2MNE	
L3, L4	IND FER BEAD 330OHM@100 MH Z 2.5A 25% SMT		TDK	MPZ2012S331AT000	
U1	PMIC	SOT23-5	NXP	PCA9421UK_WLCSP25	
R1	RES MF 20.0K 1/10W 1%	0603	BOURNS	CR0603-FX-2002ELF	
R2-R5	RES MF 10.0K 1/10W 1%	0603	YAGEO AMERICA	RC0603FR-0710KL	
R7, R9	RES MF ZERO OHM 1/10W -- AE C-Q200	0603	PANASONIC	ERJ-3GEY0R00V	
SW1	SW SPST PB SMT 16V 20MA		ALPS ELECTRIC (USA) INC.	SKRPABE010	
BT1	BATTERY HOLDER SMD	CR2025/2032	Linx Technologies	BAT-HLD-001	
TP11-TP14, TP17-TP19	TEST POINT PC MULTI PURPOSE BLK TH		KEYSTONE ELECTRONICS	5011	
TP1-TP9, TP15, TP16, TP20	TEST POINT PC MULTI PURPOSE RED TH		KEYSTONE ELECTRONICS	5010	
J7-J11, J13	HDR 1x3 TH 100MIL SP 343H AU 100L		SAMTEC	TSW-103-07-F-S	
J4, J6	HDR 1X6 TH 100MIL SP 338H AU 100L		SAMTEC	TSW-106-07-F-S	
J5	HDR 2X5 TH 100MIL CTR 338H AU 100L		SAMTEC	TSW-105-07-F-D	
J2	HDR 1X10 TH 100MIL CTR 338H		SAMTEC	TSW-110-07-F-S	

Table 3. Bill of Materials (BOM)...continued

Ref	Description	Size (inch)	Manufacture	Part Number	Notes
	AU 100L				
J1, J3	HDR 1X8 TH 100MIL SP 338H AU 100L		SAMTEC	TSW-108-07-F-S	
J12	CON 5 USB MICRO_ B RA SKT SMT 0.65MM SP 102H AU		WURTH ELEKTR ONIK EISOS GM BH & CO. KG	629105136821	
C5, C7	CAP CER 4.7 uF 16V 10 % X7R	0603	MURATA	GRM188Z71C475KE21	Not Installed
C9, C11-C13	CAP CER 0.1 uF 16V 10 % X7R	0201	MURATA	GRM033Z71C104KE14	Not Installed
JP1-JP11	HDR 1X2 TH 100MIL SP 338H AU 100L		SAMTEC	TSW-102-07-F-S	Not Installed
J15-J18	HDR 1x3 TH 100MIL SP 343H AU 100L		SAMTEC	TSW-103-07-F-S	Not Installed
R8, R10	RES MF 10.0K 1/10W 1%		YAGEO AMERICA	RC0603FR-0710KL	Not Installed

## 4 Installing and configuring software tools

- Unzip the provided PCA9421 Evaluation Kit GUI file into selected folder. No need to install. If password is asked during unzip, type “NXP”
- Install the FTDI cable driver from website <https://www.ftdichip.com/Drivers/D2XX.htm>.
- Run the file PCA9421.exe. The interface is shown in [Figure 6](#).

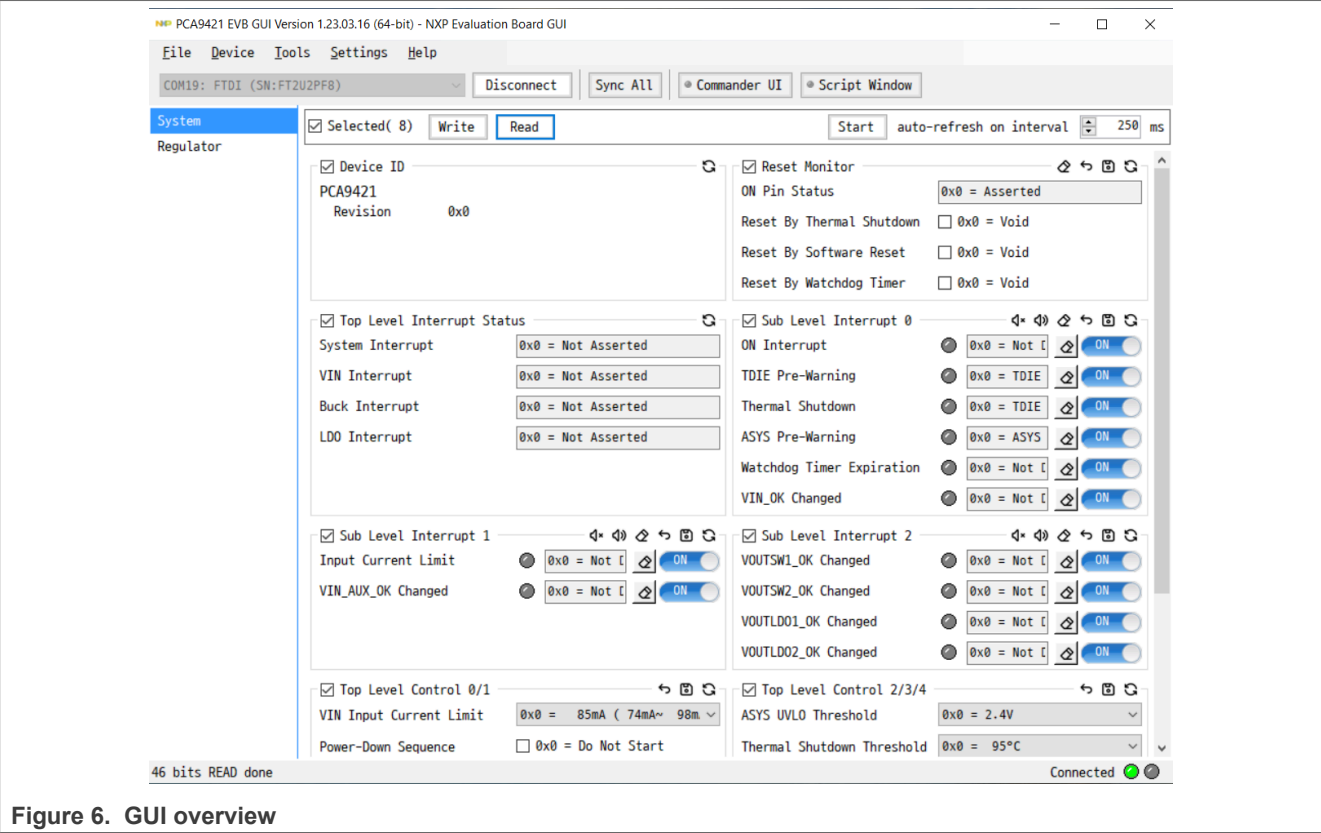


Figure 6. GUI overview

When the GUI is launched, it looks for a PCA9421UK-EVM target board connected via the USB cable. If connected, the GUI panels display “Connected” on the bottom right.

## 5 GUI description

As shown in [Figure 7](#), the GUI is a user-friendly tool which allows access to the on-chip registers to perform write/read commands manually or automatically (depending on GUI setting). Below is a quick guide of the key blocks that the GUI provides.

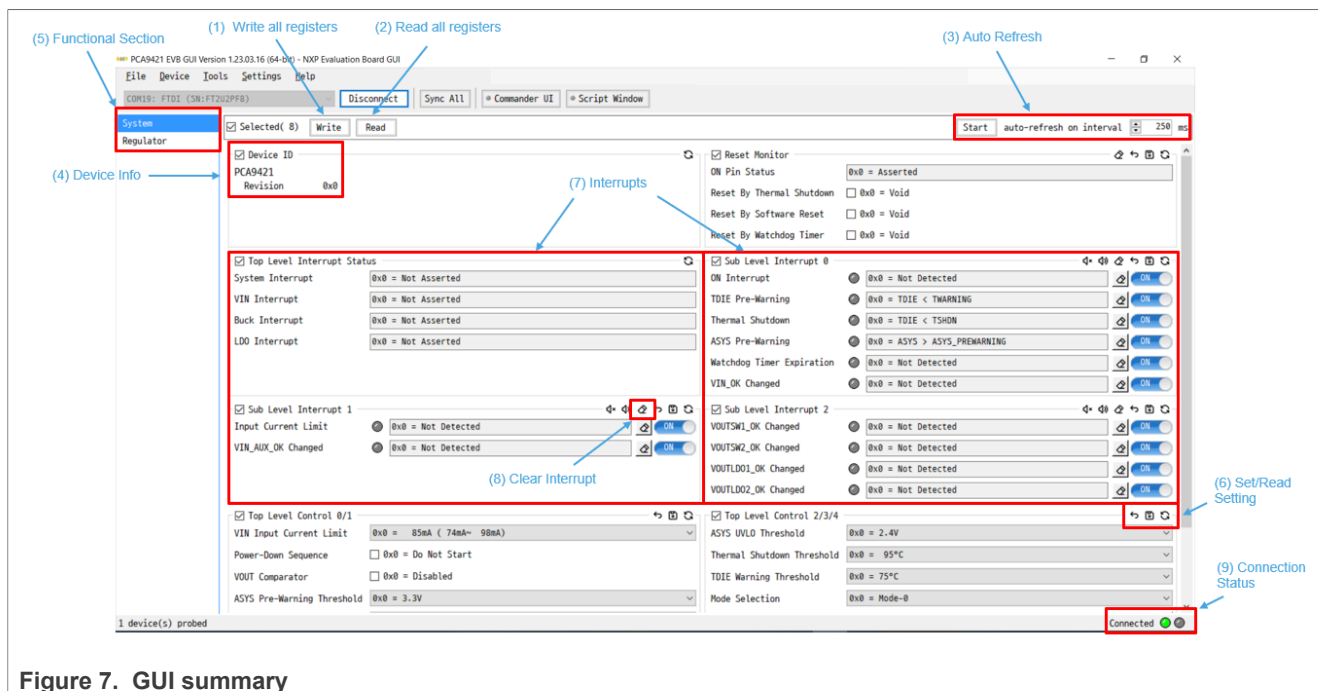


Figure 7. GUI summary

- Write All Registers:** Click the write button on the GUI to perform a “write” command to all the designated registers on PCA9421UK based on the current GUI setting. It is recommended to disable auto refresh before clicking the write all command, since some of settings might be updated by the auto refresh if turned on.
- Read All Registers:** Click the read button on the GUI to perform a “read” command and update all the register values reflected on the GUI.
- Auto Refresh:** Sets the auto refresh timer for the Interrupts and Status registers. By choosing different options from the drop-down menu, the GUI performs the backend automatic read and refresh functions accordingly.
  - 1/second – Read all registers 1 time per second (1Hz)
  - 2/second – Read all registers 2 times per second (2Hz)
  - 4/second – Read all registers 4 times per second (4Hz)
  - Disabled – Disable the auto read
- Device information:** It shows the device ID, device revision and its slave address information. Note that the GUI selects the slave address configured on the evaluation automatically.
- Function Selection Tab:** All function related registers are grouped into eight different tabs including “Top level control”, “Interrupts”, “Charging Control”, “Charging Status” and “Group A-D setting”. Click the tab to access the related registers.
- Set/Read Setting:** Set/Read the registers on the selected function tab.
- Interrupts:** Related to register 0x01 (TOP\_INT), 0x02 (SUB\_INT0), 0x04 (SUB\_INT1) and 0x06 (SUB\_INT2). When related events happen, the unmasked interrupt bits are set and the GUI highlights the checkboxes and changes the background color to RED.
- Clear Interrupt:** Related to register 0x02 (SUB\_INT0), 0x04 (SUB\_INT1) and 0x06 (SUB\_INT2). The clear interrupt button is used to CLEAR the interrupt bits. In the case multiple interrupts bits are set at the same time, the button clears all set interrupts bits.
- Connections Status:** When valid communication between GUI and the hardware is established, it shows “connected”, otherwise it shows “disconnected”. The cable used is also shown at the right side of the connection status bar.

## 6 Revision history

Table 4. Revision history

Document ID	Release date	Description
UM11987 v.1.0	8 November 2023	<ul style="list-style-type: none"><li>Initial version</li></ul>



## Legal information

### Definitions

**Draft** — A draft status on a document indicates that the content is still under internal review and subject to formal approval, which may result in modifications or additions. NXP Semiconductors does not give any representations or warranties as to the accuracy or completeness of information included in a draft version of a document and shall have no liability for the consequences of use of such information.

### Disclaimers

**Limited warranty and liability** — Information in this document is believed to be accurate and reliable. However, NXP Semiconductors does not give any representations or warranties, expressed or implied, as to the accuracy or completeness of such information and shall have no liability for the consequences of use of such information. NXP Semiconductors takes no responsibility for the content in this document if provided by an information source outside of NXP Semiconductors.

In no event shall NXP Semiconductors be liable for any indirect, incidental, punitive, special or consequential damages (including - without limitation - lost profits, lost savings, business interruption, costs related to the removal or replacement of any products or rework charges) whether or not such damages are based on tort (including negligence), warranty, breach of contract or any other legal theory.

Notwithstanding any damages that customer might incur for any reason whatsoever, NXP Semiconductors' aggregate and cumulative liability towards customer for the products described herein shall be limited in accordance with the Terms and conditions of commercial sale of NXP Semiconductors.

**Right to make changes** — NXP Semiconductors reserves the right to make changes to information published in this document, including without limitation specifications and product descriptions, at any time and without notice. This document supersedes and replaces all information supplied prior to the publication hereof.

**Suitability for use** — NXP Semiconductors products are not designed, authorized or warranted to be suitable for use in life support, life-critical or safety-critical systems or equipment, nor in applications where failure or malfunction of an NXP Semiconductors product can reasonably be expected to result in personal injury, death or severe property or environmental damage. NXP Semiconductors and its suppliers accept no liability for inclusion and/or use of NXP Semiconductors products in such equipment or applications and therefore such inclusion and/or use is at the customer's own risk.

**Applications** — Applications that are described herein for any of these products are for illustrative purposes only. NXP Semiconductors makes no representation or warranty that such applications will be suitable for the specified use without further testing or modification. Customers are responsible for the design and operation of their applications and products using NXP Semiconductors products, and NXP Semiconductors accepts no liability for any assistance with applications or customer product design. It is customer's sole responsibility to determine whether the NXP Semiconductors product is suitable and fit for the customer's applications and products planned, as well as for the planned application and use of customer's third party customer(s). Customers should provide appropriate design and operating safeguards to minimize the risks associated with their applications and products.

NXP Semiconductors does not accept any liability related to any default, damage, costs or problem which is based on any weakness or default in the customer's applications or products, or the application or use by customer's third party customer(s). Customer is responsible for doing all necessary testing for the customer's applications and products using NXP Semiconductors products in order to avoid a default of the applications and the products or of the application or use by customer's third party customer(s). NXP does not accept any liability in this respect.

**Terms and conditions of commercial sale** — NXP Semiconductors products are sold subject to the general terms and conditions of commercial sale, as published at <https://www.nxp.com/profile/terms>, unless otherwise agreed in a valid written individual agreement. In case an individual agreement is concluded only the terms and conditions of the respective agreement shall apply. NXP Semiconductors hereby expressly objects to applying the customer's general terms and conditions with regard to the purchase of NXP Semiconductors products by customer.

**Export control** — This document as well as the item(s) described herein may be subject to export control regulations. Export might require a prior authorization from competent authorities.

**Suitability for use in non-automotive qualified products** — Unless this document expressly states that this specific NXP Semiconductors product is automotive qualified, the product is not suitable for automotive use. It is neither qualified nor tested in accordance with automotive testing or application requirements. NXP Semiconductors accepts no liability for inclusion and/or use of non-automotive qualified products in automotive equipment or applications.

In the event that customer uses the product for design-in and use in automotive applications to automotive specifications and standards, customer (a) shall use the product without NXP Semiconductors' warranty of the product for such automotive applications, use and specifications, and (b) whenever customer uses the product for automotive applications beyond NXP Semiconductors' specifications such use shall be solely at customer's own risk, and (c) customer fully indemnifies NXP Semiconductors for any liability, damages or failed product claims resulting from customer design and use of the product for automotive applications beyond NXP Semiconductors' standard warranty and NXP Semiconductors' product specifications.

**Translations** — A non-English (translated) version of a document, including the legal information in that document, is for reference only. The English version shall prevail in case of any discrepancy between the translated and English versions.

**Security** — Customer understands that all NXP products may be subject to unidentified vulnerabilities or may support established security standards or specifications with known limitations. Customer is responsible for the design and operation of its applications and products throughout their lifecycles to reduce the effect of these vulnerabilities on customer's applications and products. Customer's responsibility also extends to other open and/or proprietary technologies supported by NXP products for use in customer's applications. NXP accepts no liability for any vulnerability. Customer should regularly check security updates from NXP and follow up appropriately. Customer shall select products with security features that best meet rules, regulations, and standards of the intended application and make the ultimate design decisions regarding its products and is solely responsible for compliance with all legal, regulatory, and security related requirements concerning its products, regardless of any information or support that may be provided by NXP.

NXP has a Product Security Incident Response Team (PSIRT) (reachable at [PSIRT@nxp.com](mailto:PSIRT@nxp.com)) that manages the investigation, reporting, and solution release to security vulnerabilities of NXP products.

**NXP B.V.** — NXP B.V. is not an operating company and it does not distribute or sell products.

### Trademarks

Notice: All referenced brands, product names, service names, and trademarks are the property of their respective owners.

**NXP** — wordmark and logo are trademarks of NXP B.V.

Tables

Tab. 1.	PCA9421UK-EVM board description .....	5	Tab. 3.	Bill of Materials (BOM) .....	10
Tab. 2.	Jumper and switch definitions .....	7	Tab. 4.	Revision history .....	14

Figures

Fig. 1.	PCA9421UK-EVM (WLCSP) evaluation board .....	4	Fig. 4.	PCA9421UK-EVM connection .....	8
Fig. 2.	PCA9421UK-EVM evaluation board, top view .....	5	Fig. 5.	PCA9421UK-EVM evaluation board placement .....	9
Fig. 3.	Jumper and switch locations for PCA9421UK-EVM .....	6	Fig. 6.	GUI overview .....	12
			Fig. 7.	GUI summary .....	13

## Contents

<b>1</b>	<b>Finding kit resources and information on the NXP web site .....</b>	<b>3</b>
1.1	Collaborate in the NXP community .....	3
<b>2</b>	<b>Getting ready .....</b>	<b>3</b>
2.1	Kit contents/packing list .....	3
2.2	Static handling requirements .....	3
2.3	Minimum system requirements .....	3
<b>3</b>	<b>Getting to know the hardware .....</b>	<b>4</b>
3.1	Device description .....	4
3.2	Key features .....	4
3.3	Board description .....	5
3.4	Jumper and switch definitions .....	6
3.5	Evaluation board connections .....	8
3.5.1	Definitions .....	8
3.6	Schematic, board layout and bill of materials .....	8
3.6.1	Placement .....	9
3.6.2	Layout guideline .....	9
3.6.3	PCA9421UK-EVM BOM list .....	10
<b>4</b>	<b>Installing and configuring software tools ....</b>	<b>11</b>
<b>5</b>	<b>GUI description .....</b>	<b>12</b>
<b>6</b>	<b>Revision history .....</b>	<b>14</b>
	<b>Legal information .....</b>	<b>15</b>

Please be aware that important notices concerning this document and the product(s) described herein, have been included in section 'Legal information'.

# Mouser Electronics

Authorized Distributor

Click to View Pricing, Inventory, Delivery & Lifecycle Information:

NXP:

[PCA9421UK-EVM](#)