

CONTENT INDEXING

- 01. INDEX
- 02. Block Diagram
- 03. System Power
- 04. USB OTG/HUB
- 05. DDR3
- 06. Flash/TF card
- 07. GPIO
- 08. HDMI
- 09. LVDS
- 10. Camera/TP
- 11. RK1000_S
- 12. RMI1_100M

PCB POWER WIRE WIDTH INDICATE



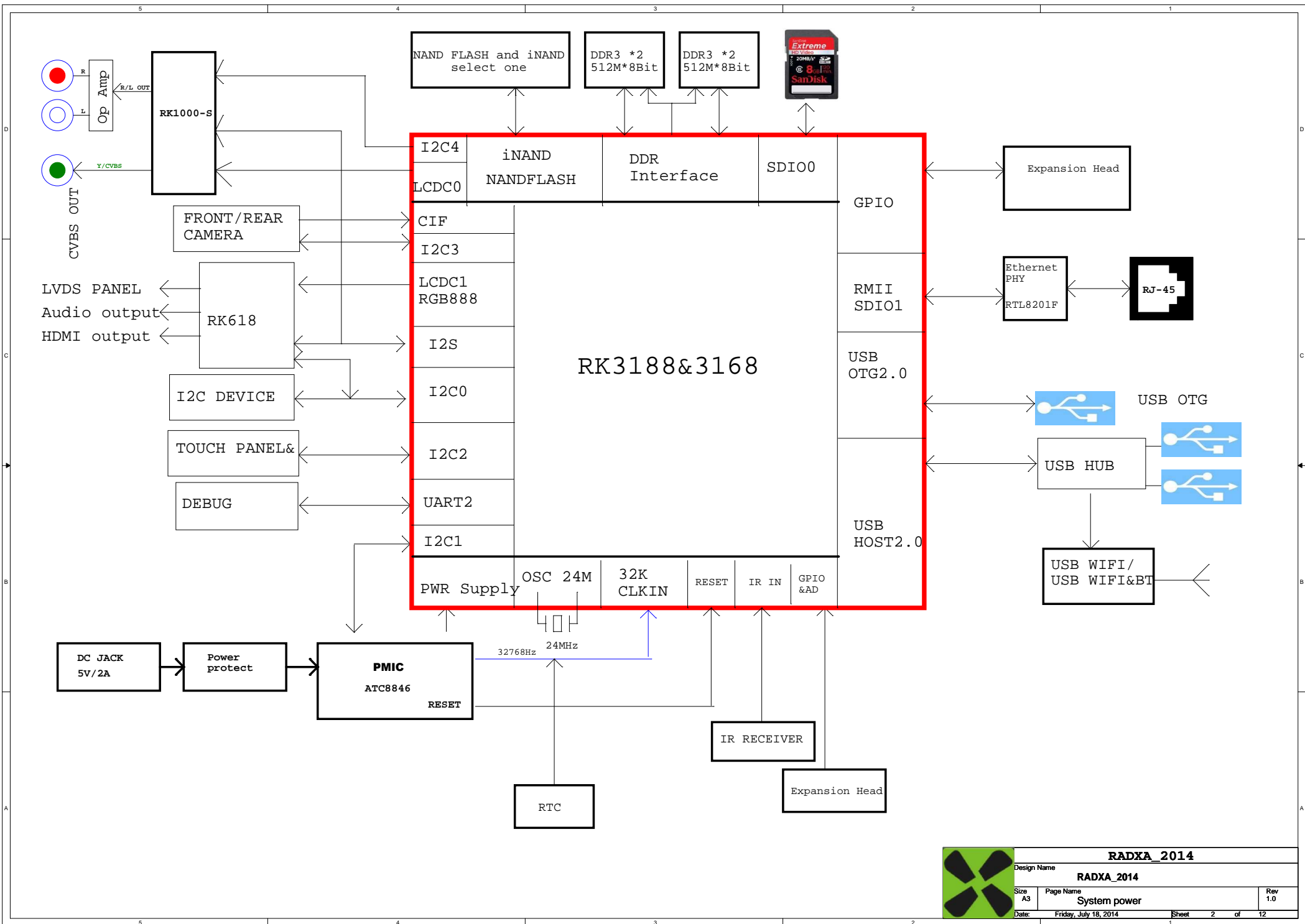
- above 80 miles
- above 50 miles
- above 30 miles
- above 16 miles
- Under needs

6 LAYERS PCB STACK

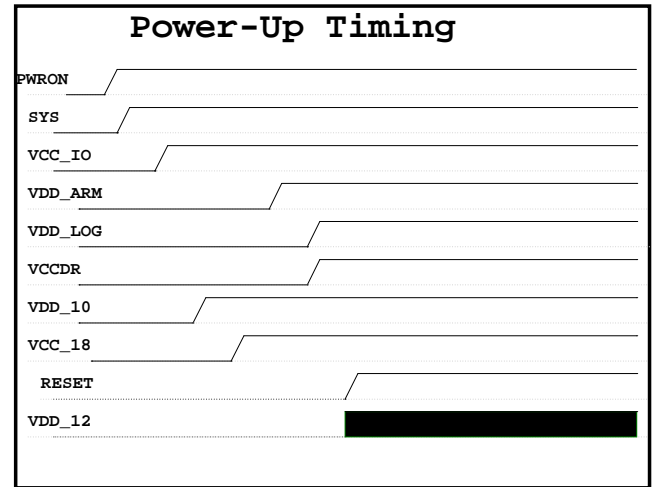
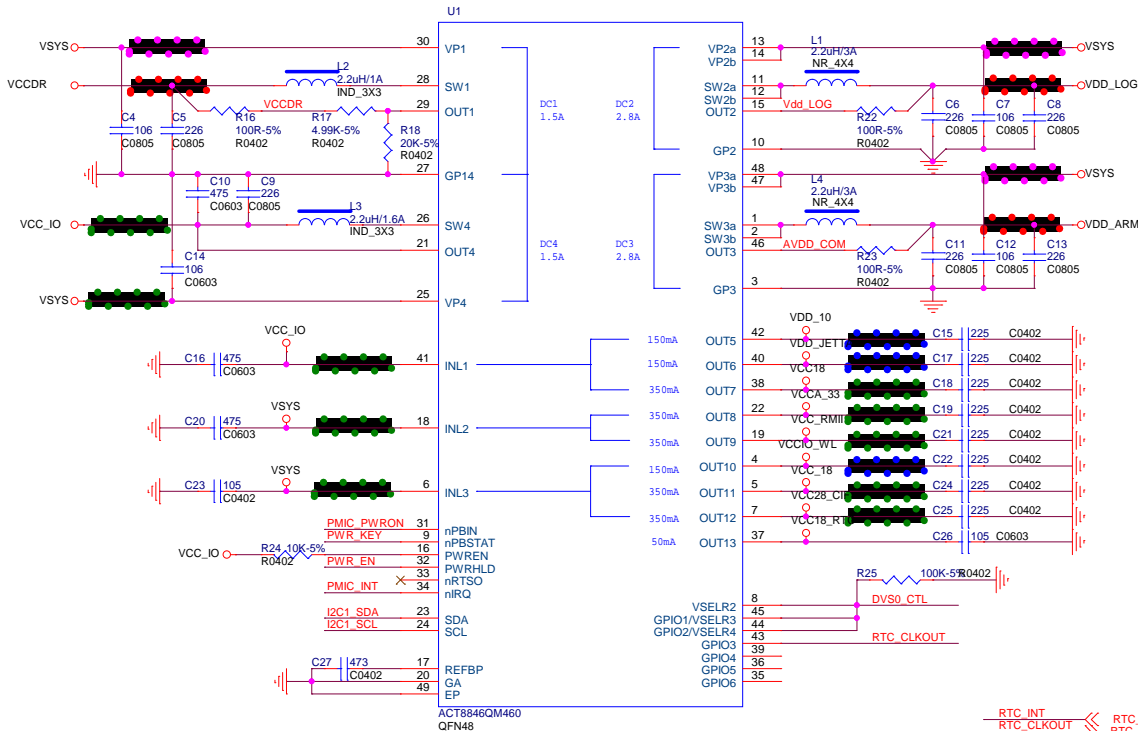
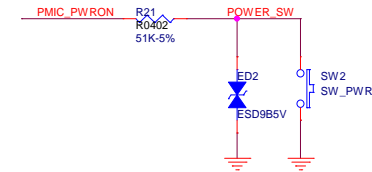
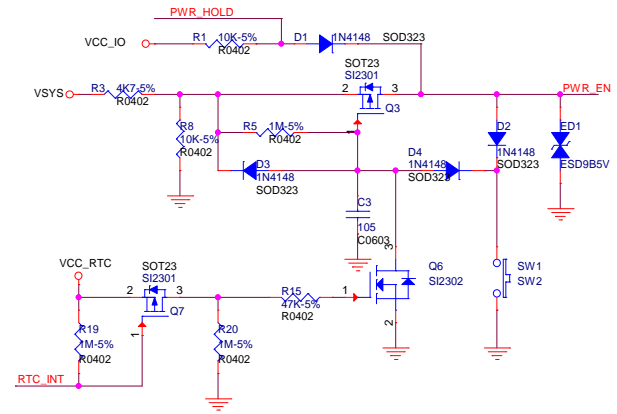
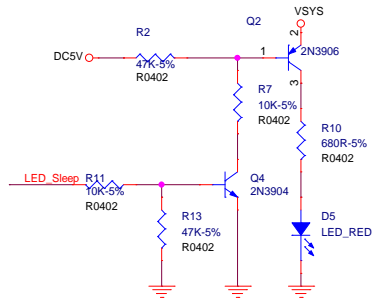
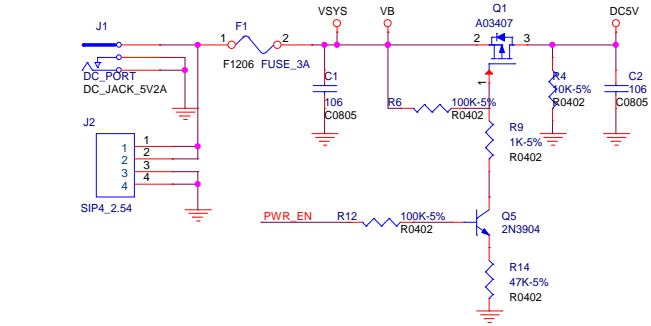
TOP	Prepreg 3313*1 4.0MIL(0.10mm)	Hoz(18um) + plating copper(18um)
GND	Core 3.94MIL(0.1mm)	1oz(35um)
POWER(S1)	Adjust	1oz(35um)
S1(S2)	Core 3.94MIL(0.1mm)	1oz(35um)
GND(POWER)	Prepreg 3313*1 4.0MIL(0.10mm)	1oz(35um)
S2(BOTTOM)	Prepreg 3313*1 4.0MIL(0.10mm)	Hoz(18um) + plating copper(18um)



Design Name			
RADXA_2014			
Size	Page Name	Rev	
A3	CONTENT INDEXING	1.0	
Date:	Friday, July 18, 2014	Sheet	1 of 12

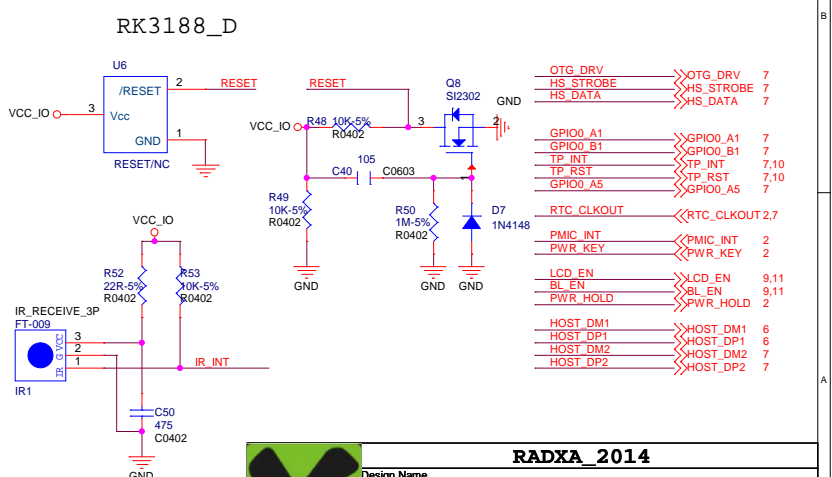
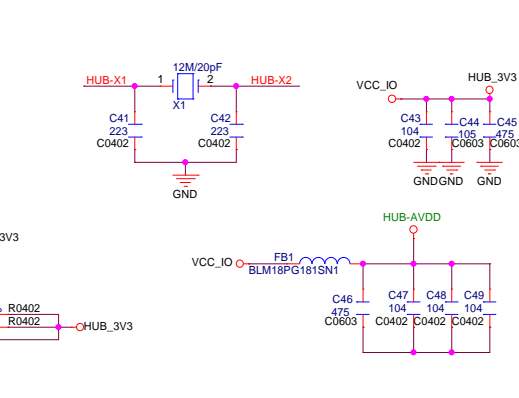
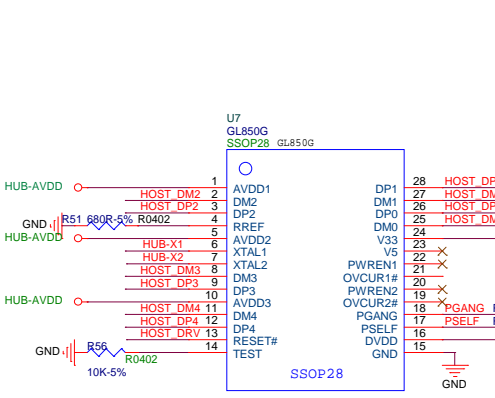
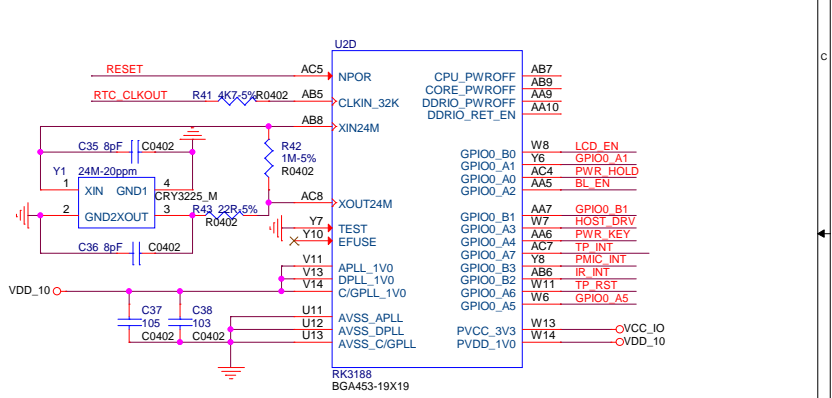
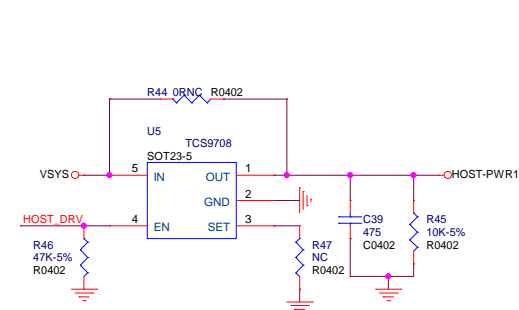
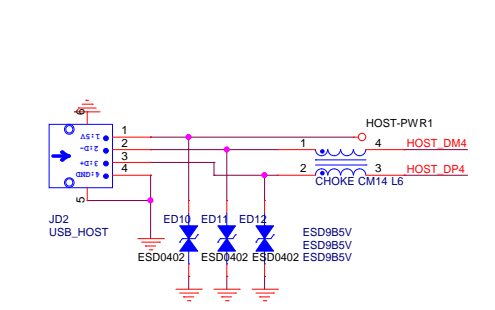
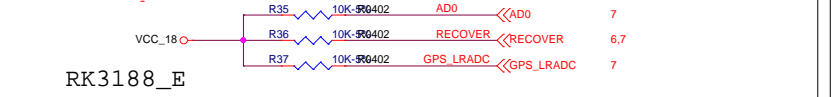
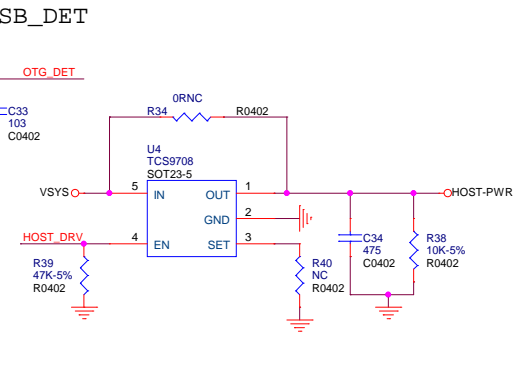
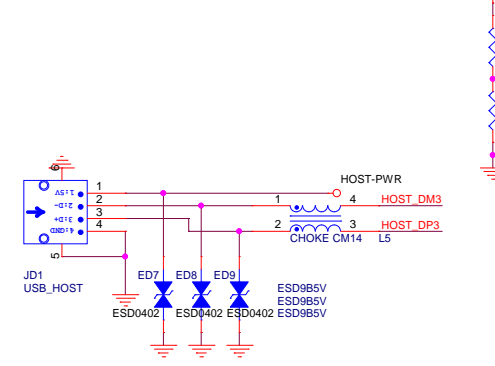
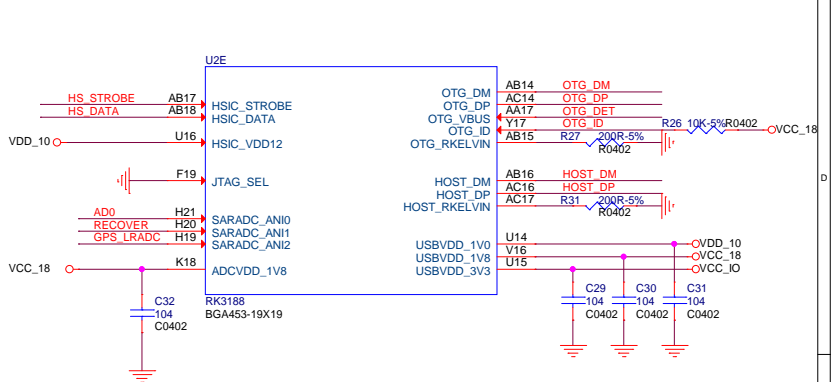
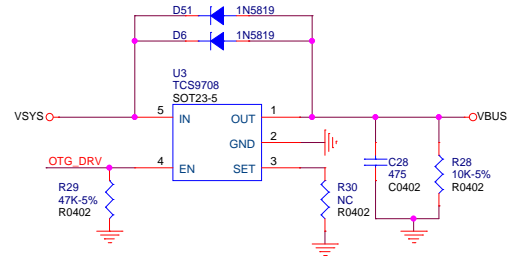
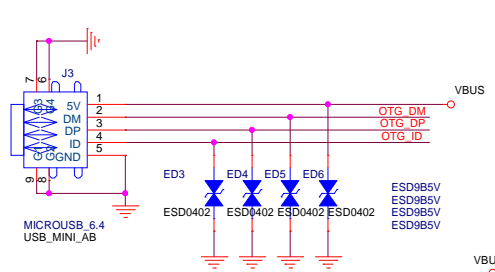


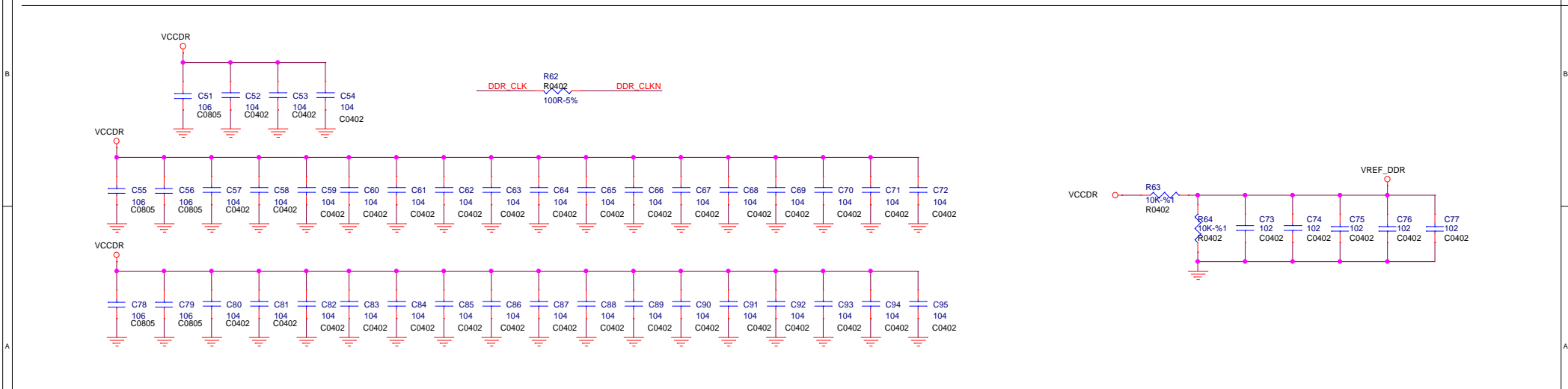
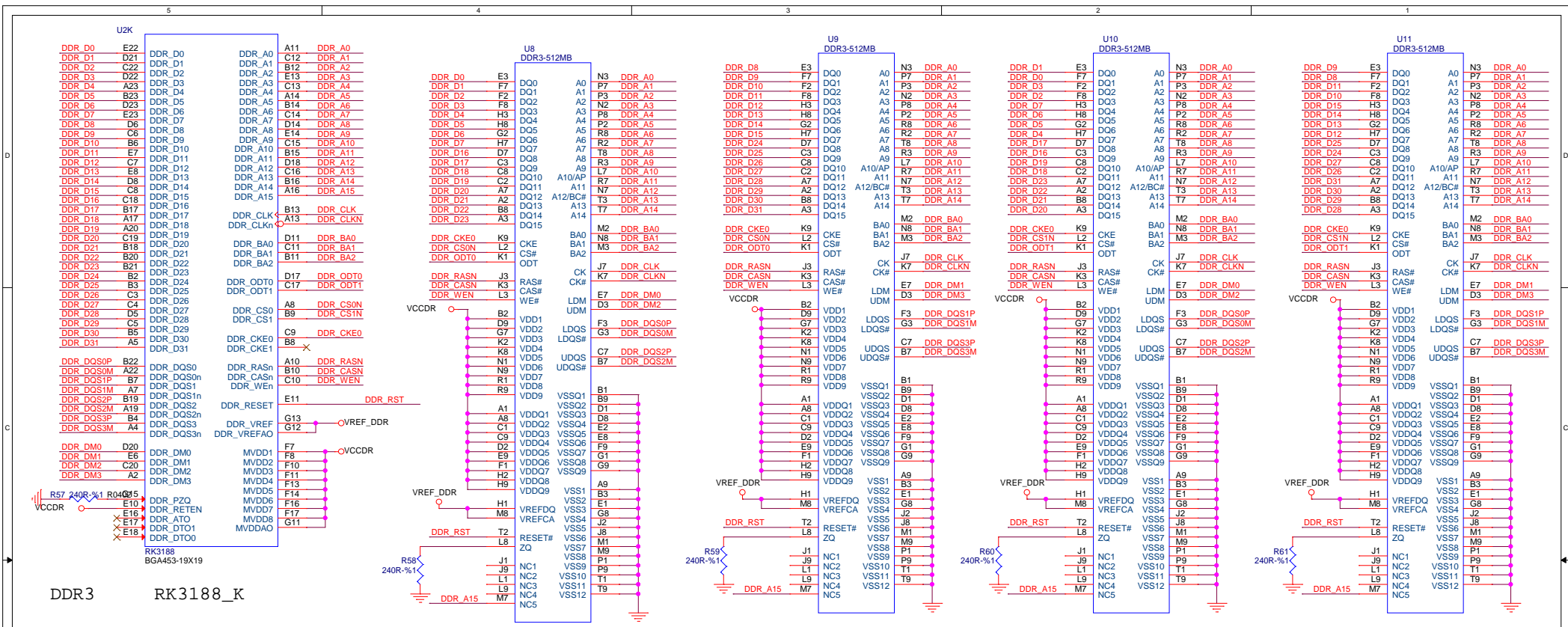
DC 5V/3A IN

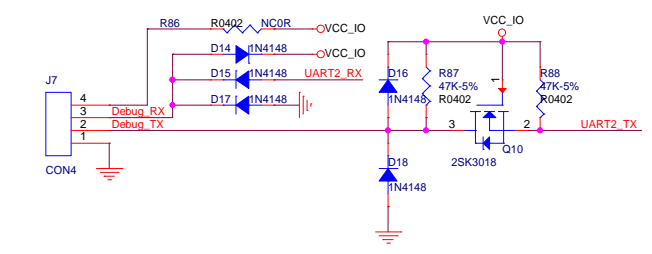
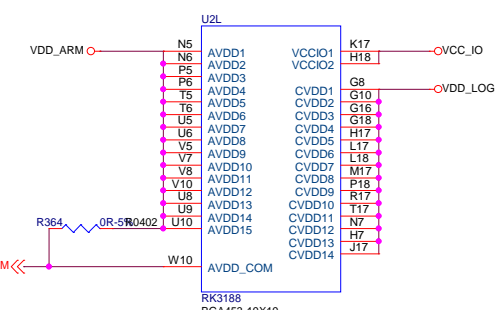
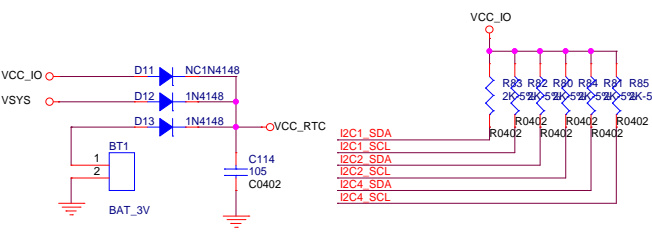
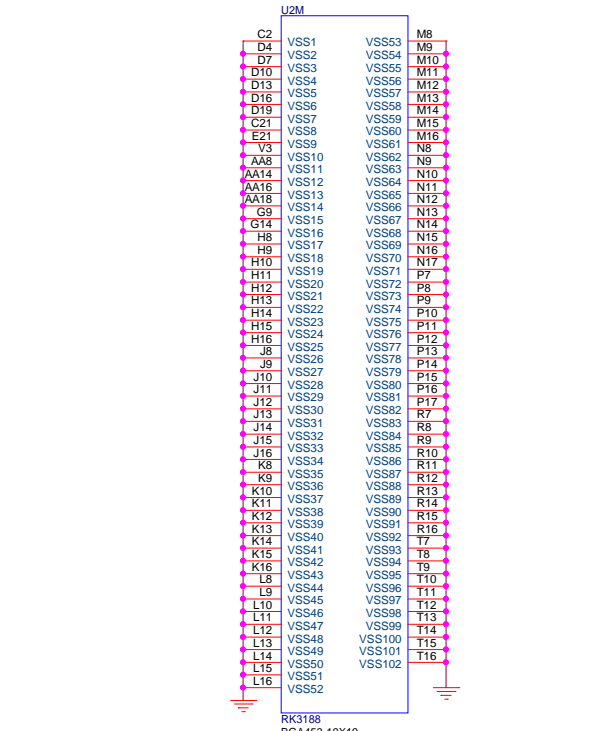
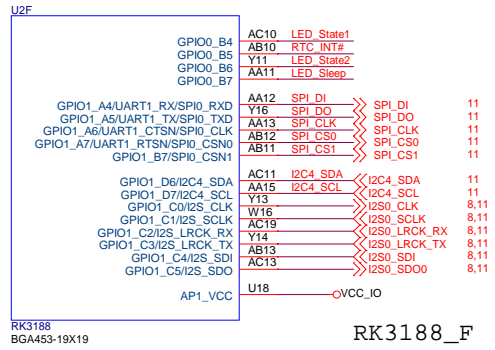
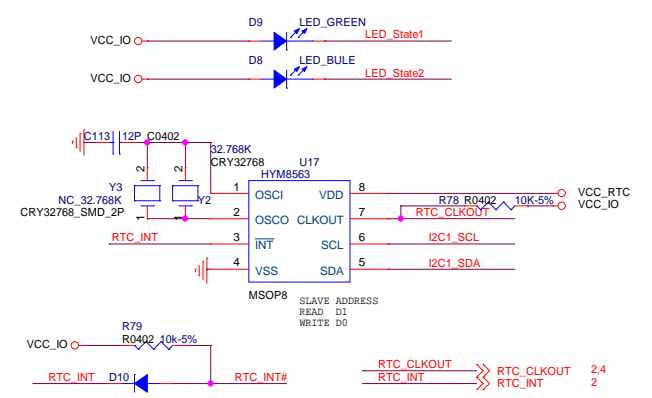


- RTC_INT <<< RTC_INT 7
- RTC_CLKOUT <<< RTC_CLKOUT 4,7
- PMIC_INT <<< PMIC_INT 4
- LED_Sleep <<< LED_Sleep 7
- POWER_SW <<< POWER_SW 7
- PWR_EN <<< PWR_EN 7
- AVDD_COM <<< AVDD_COM 7
- PWR_HOLD <<< PWR_HOLD 4
- PWR_KEY <<< PWR_KEY 7
- DVSO_CTL <<< DVSO_CTL 4
- I2C1_SDA <<< I2C1_SDA 7
- I2C1_SCL <<< I2C1_SCL 7

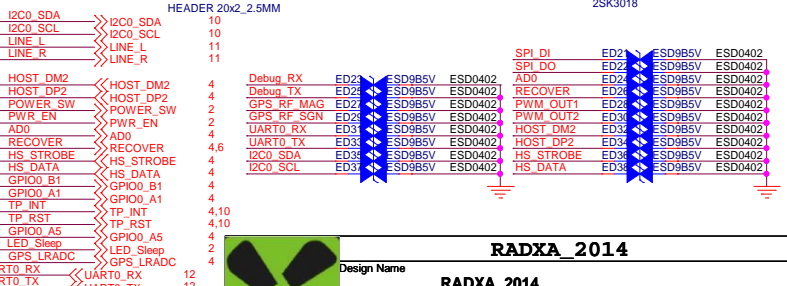
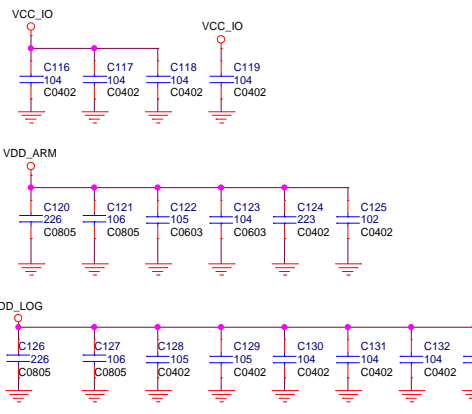
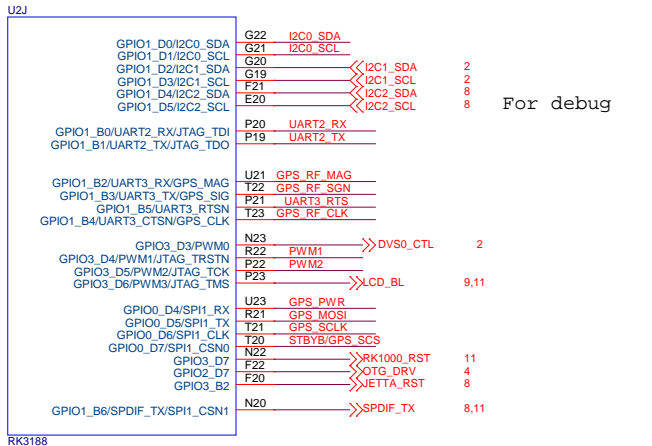
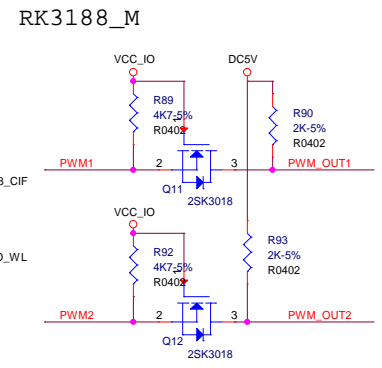
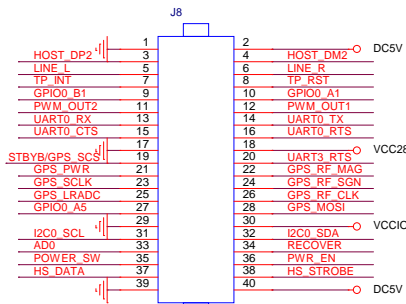
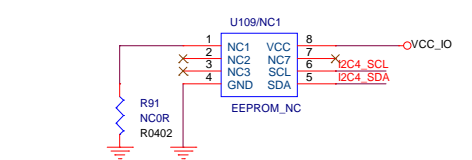








RK3188_L
Note:
Place these filter capacitors under CPU.

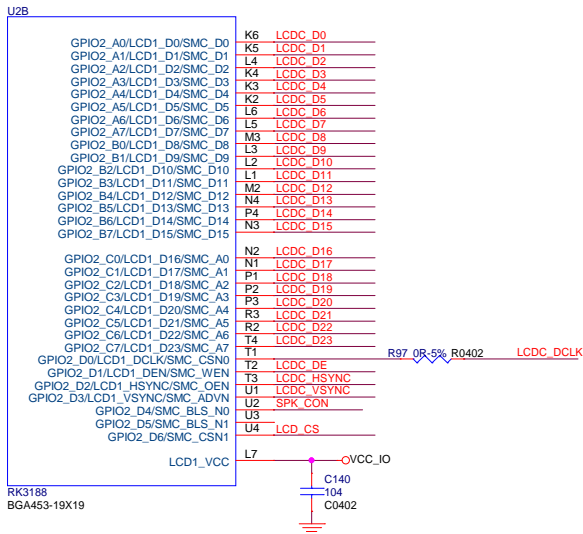


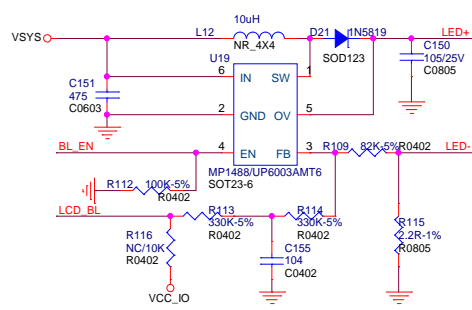
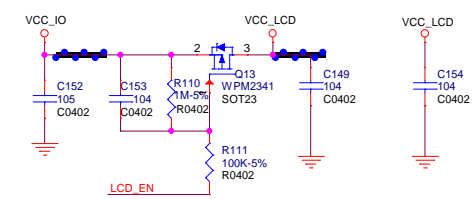
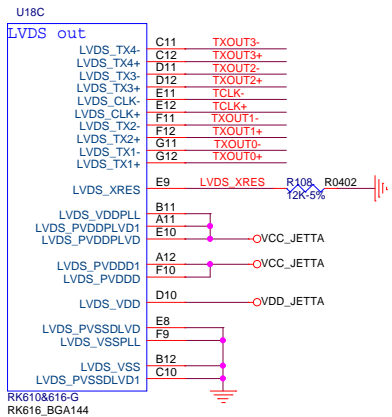
RK3188_J
BGA453-19X19

RK3188 CORE POWER FILTER

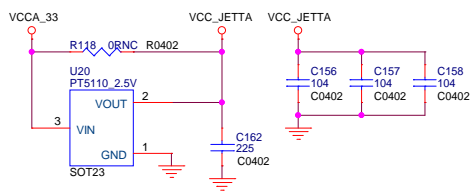
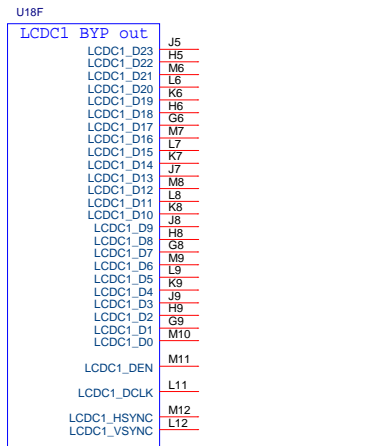
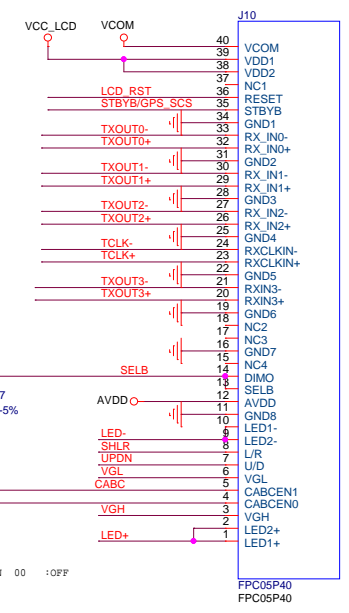
RADXA 2014

Design Name		RADXA_2014	
Size	Page Name	Date:	Rev
A3	GPIO	Friday, July 18, 2014	7 of 12

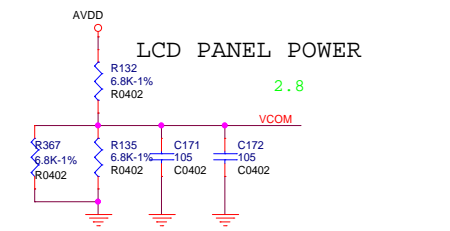
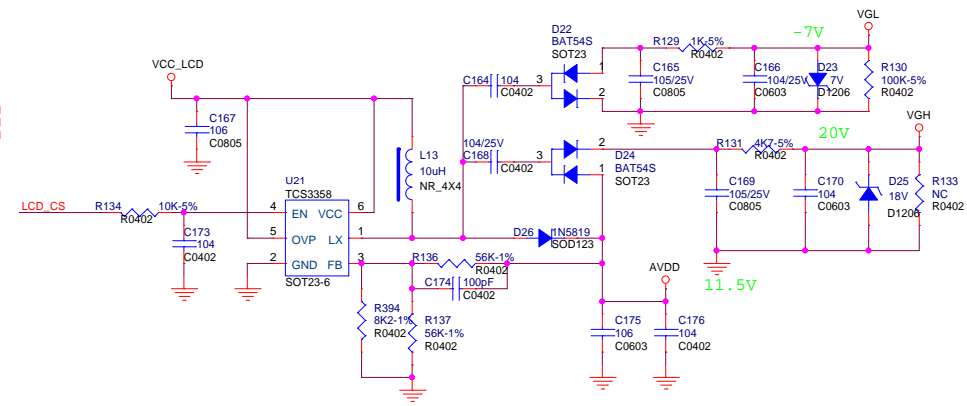
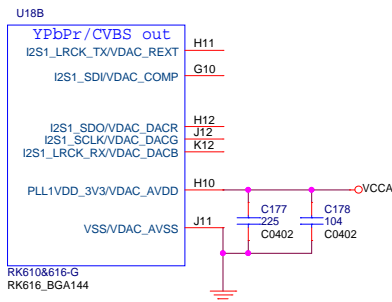
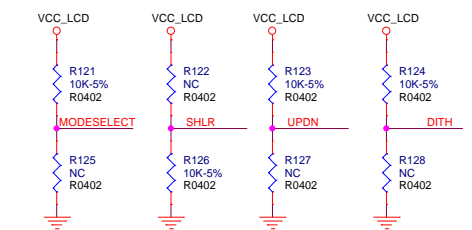
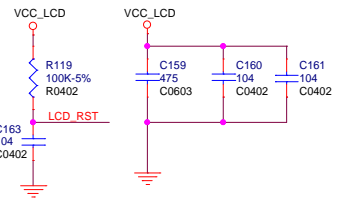




MP1488 FB=104mV
UP6003 FB=300mV




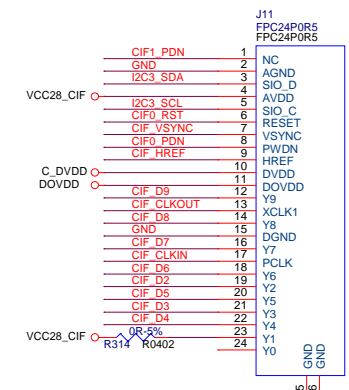
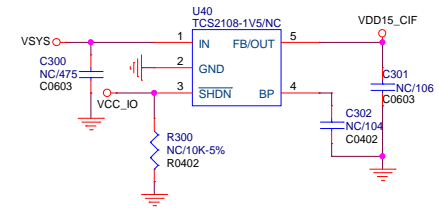
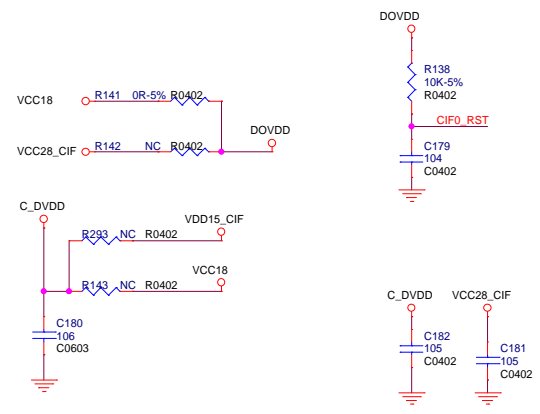
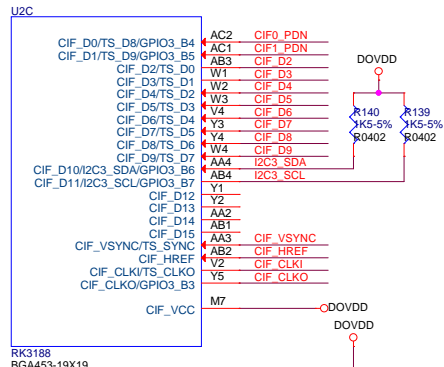
RK616 VCC_JETTA:2.5V



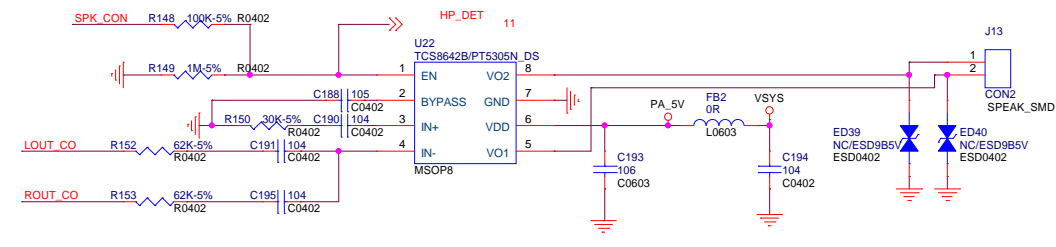
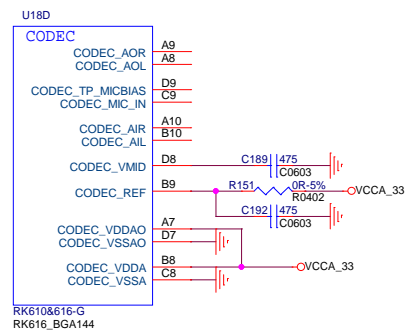
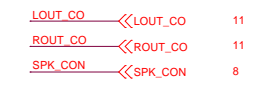
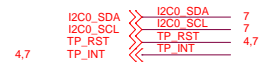
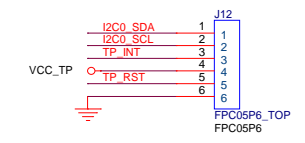
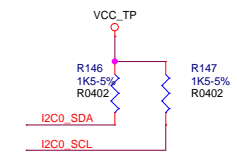
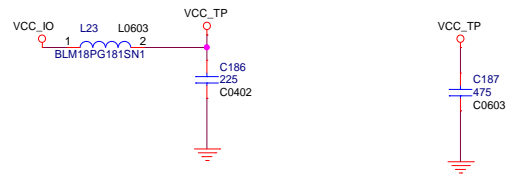
NOTE:
800*480的屏R219 56K, 此时电压4.1V;
1024*600的屏R219贴68K, 此时电压3.6V.

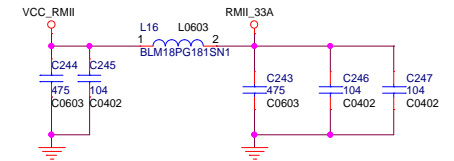
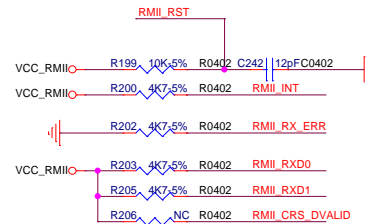
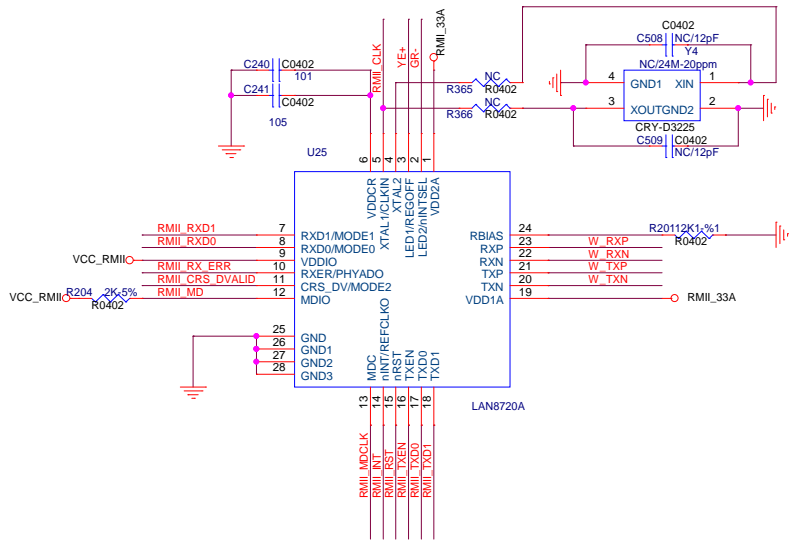
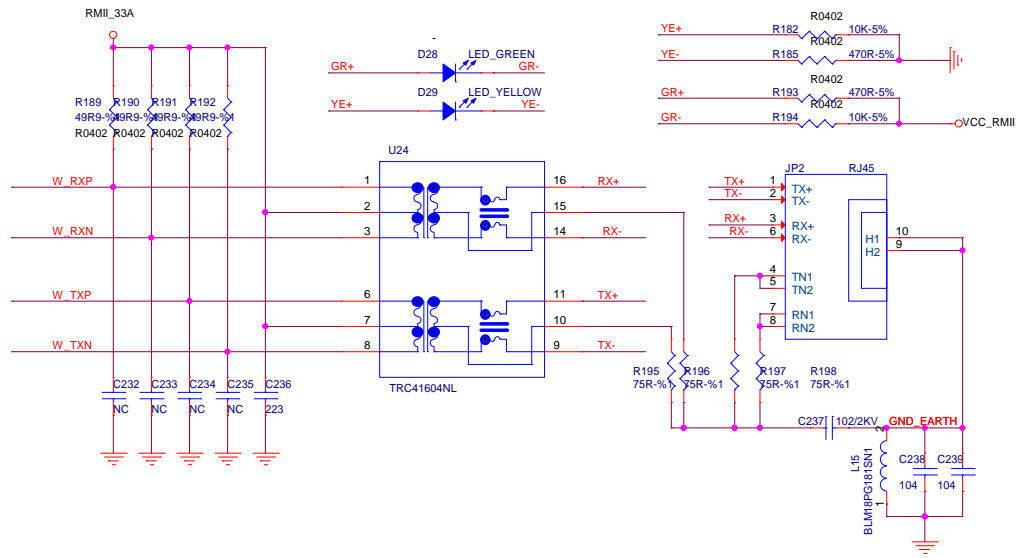
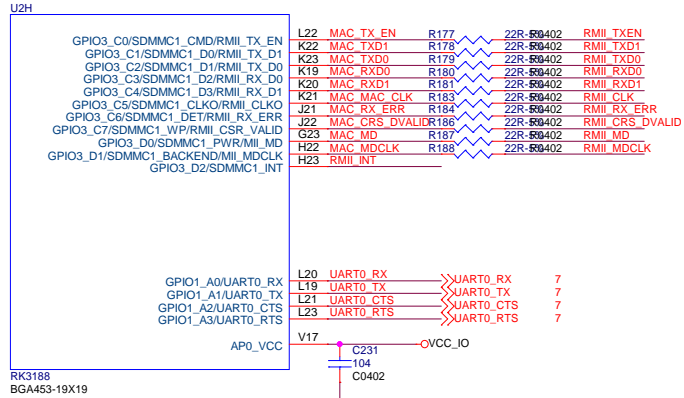
RK616 R163:0R ; RK616 R164:0R ;C31:0.1uF

			
Design Name			
RADXA_2014			
Size	Page Name	Rev	
A3	LVDS	1.0	
Date:	Friday, July 18, 2014	Sheet	9 of 12



Note: If using other sensor modules, follow to the requirements of SPEC on the power supply.





RTL8201F POWER